



***CHEROKEE***  
**PARTS CATALOG**

**PA-28-140**

**PA-28-180**

**PA-28-150**

**PA-28-235**

**PA 28-160**

**PA-28R-180**

**PA-28R-200**

**PIPER AIRCRAFT CORPORATION**

---

# PIPER PARTS CATALOG

---

## REVISION STATUS

The information compiled in this Parts Catalog will be kept current by revisions distributed periodically.  
Current Revisions to this PA-28 and PA-28R Parts Catalog issued August 16, 1973 are as follows:

753 582 (PR750815) .....	Dated August 1975
753 582 (PR760430) .....	Dated April 1976
753 582 (PR760831) .....	Dated August 1976
753 582 (PR770304) .....	Dated March 1977
753 582 (PR770715) .....	Dated July 1977
753 582 (PR780908) .....	Dated September 1978
753 582 (PR790405) .....	Dated April 1979
753 582 (PR800520) .....	Dated May 1980
753-582 (PR040610) .....	Dated June 10, 2004
753 582 (PR071210) .....	Dated December 2007
753 582 (PR080310) .....	Dated March 2008
753 582 (PR080610) .....	Dated June 2008
753 582 (PR080910) .....	Dated September 2008
753 582 (PR090310) .....	Dated June 2009

\* Piper has ceased production of all Aerofiche (i.e.,) products. Parts Catalog subscriptions are available exclusive from Aventext. Inc. ([www.Avantext.com](http://www.Avantext.com)) on CD-Rom or DVD. The CDs/DVDs include applicable Service Bulletins and Service Letters.

## WARNING

The information contained in this manual is periodically revised. Piper Aircraft Corporation urges all users of this manual to keep it current. Contact your nearest Piper Aircraft Corporation distributor to arrange for a subscription to future revisions.

## MAINTENANCE ALERT

Refer to PIPER Service Letter No. 1041  
Accident/Incident Reporting

# PIPER PARTS CATALOG

## INTRODUCTION

This illustrated Parts Catalog provides simple, positive identification of replacement parts for the Piper Model PA-28 CHEROKEE -151/161 manufactured by the Piper Aircraft Corporation of Vero Beach, Florida.

**NOTE: DO NOT USE THIS CATALOG FOR RIGGING AND INSTALLATION PURPOSES.**

1. The catalog is divided into thirteen major sections as follows:
  - a. Section I to XII inclusive contains all replacement parts for the complete airplane. Each section is subdivided and each division includes an illustration and a parts listing.
  - b. Section XIII is the Miscellaneous Group. This group includes an illustration and parts list for the Placards and Exterior Stencils, a listing of the Optional Equipment Kits, Repair kits and Special Tools, and a listing of Miscellaneous Hardware and Consumables.
2. The following is a brief explanation of the columns in the parts lists: (Refer to EXAMPLE below).
  - a. The FIGURE AND INDEX NUMBER column indicates the illustration figure number and its part index number. EXAMPLE: (2-1), the 2 is the figure number and the 1 is the index number. The figure number appears only at the top of each parts list page.
  - b. The PART NUMBER column contains the identifying number of the replacement part and this number must be shown on all parts orders.
  - c. The CODE column is for the purpose of indicating special uses of the part. An explanation of the letter code used is shown on the grid (page) preceding each parts listing and pertains to that listing only.

**ALL PARTS WITH A "W" MUST BE PURCHASED FROM PIPER  
AIRCRAFT CORPORATION, VERO BEACH, FLORIDA**

- d. The NOMENCLATURE column indicates the part name. This name must be shown on all parts orders.
- e. The NO. REQ. (Number Required) column represents the total quantity of parts used per figure when the part is not indented and the quantity of parts used per assembly when the part is indented. The symbol AR listed in this column means As Required.
- f. The SERIAL NUMBERS AFFECTED column indicates the part application by airplane serial number. Unless otherwise noted, serial numbers listed with the model year and up (ex. 28-7716001 and up) are intended to include the new style of serial numbers that do not reference the model year (ex. 2816001 and up).

EXAMPLE					
Figure and Index Number	Part Number	Code	NOMENCLATURE	No. Req.	SERIAL NUMBERS AFFECTED
2-1	XXXXX-XX		DOOR ASSEMBLY - Baggage compartment	X	
-2	XXXXX-XX		* TUBE ASSEMBLY - Baggage door latch	X	
-3	XXXXX-XX		** CLEVIS - Door latch tube assembly	X	
-4	XXXXX-XX		** CLIP - Door latch tube assembly	X	

In the nomenclature column, the next higher assembly relationship of items covered is shown by the degree of indention of each item and is indicated by an asterisk (\*). One asterisk signifies one indention, two signifies two indentions, etc. The example listing above is interpreted as follows:

If the DOOR ASSEMBLY (not indented) is ordered, it will include the three items indented under the DOOR ASSEMBLY.

If the TUBE ASSEMBLY (indented one space) is ordered, it will include the two items indented under the TUBE ASSEMBLY.

If you want only a CLEVIS or CLIP, you order only that item.

---

# PIPER PARTS CATALOG

---

## GRID NUMBERING

Piper has ceased production of all Aerofiche (i.e., microfiche) products. The Aerofiche grid numbers will be removed in the next complete revision. In the interim, as partial revisions occur, the Aerofiche grid numbering system may be modified, as explained below, to simplify production.

Deviations from the legacy Aerofiche grid numbering system will occur when it becomes necessary to add pages to the manual and will typically take two forms:

- A. Inserting pages between two existing grids in the same row.

When inserting two pages between the existing grids 1A8 and 1A9, the two new pages will be numbered 1A8A and 1A8B.

- B. Inserting pages at the end of an Aerofiche grid row.

The legacy Aerofiche grid numbering system limited page numbers in a row to a maximum of 24 (i.e., row 1A would be numbered 1A1-1A24). That limit no longer applies. Accordingly, if two pages need to be added between any existing grid row end and grid row start (i.e., 1A24 and 1B1), the new pages will simply be numbered 1A25 and 1A26.

## HOW TO IDENTIFY A PART IF YOU KNOW WHAT IT LOOKS LIKE AND KNOW WHERE IT IS LOCATED

1. Refer to Figure 1 to determine the section number in which the part is used.
2. Refer to the Table of Contents and locate the section. Note the figure numbers that illustrate the various subgroups of this main section. Select the figure title you think might contain the part you wish to identify and proceed to the grid (page) specified. If you don't find the part on this illustration, try another figure in this group.
3. Refer to Figure and Index Number in the parts listing for description of the part.

## HOW TO ORDER PARTS

When ordering parts for your Piper airplane, please observe the following instructions:

1. Place your order with your local distributor or service center.
2. Specify the model and serial number of your airplane.
3. Specify Part Number, Name, Type and Quantity Required.
4. Specify the method of shipment — freight, express, parcel post, air express, air freight or air parcel post. Where the nature of the shipment requires it or when no instructions are given, we reserve the right to ship the most suitable way.
5. Request price and delivery information prior to order placement.

## GENERAL INFORMATION

1. Shortages  
All orders are checked before leaving our Shipping Department. A packing slip is enclosed with the shipment. Claims for errors or shortages must be made within three days after receipt of orders.
2. Returned Goods  
No material should be returned without first securing written permission. Material sent in without notice will be held at the owner's risk for thirty days and will then be disposed of as we see fit.

Transportation charges must be prepaid on returned goods or the shipment will be refused.

3. Transportation Liabilities  
Piper Aircraft, Inc. cannot be held liable for damages to parts in transit from the factory. If a shipment is received in a damaged condition, have the delivery man or transportation company make a notation of the damage and file your claim with the carrier. In case of concealed damage, do not attempt to remove the part from the shipping container, or try to repair the damage, call the carrier and have their claim agent inspect the damage before filing your claim with the carrier.
4. Components  
Components listed in this Parts Catalog are used on all configurations unless otherwise noted.

---

# PIPER PARTS CATALOG

---

## PA-28 AND PA-28R SERIAL NUMBER INFORMATION

The following information should be kept in mind when ordering from this catalog:

a. The serial numbers of the aircraft covered by this Part Catalog are as follows:

- (1) Serial numbers of the 1961 PA-28-150 and PA-28-160 Cherokee Models are 28-1 to 28-84 inclusive.
  - (2) Serial numbers of the 1962 PA-28-150 and PA-28-160 Cherokee Models are 28-85 to 28-670 inclusive.
  - (3) Serial numbers of the 1963 and 1964 PA-28-150 and PA-28-160 Cherokee "B" Models are 28-725 to 28-1760 inclusive.
  - (4) Serial numbers of the 1963 and 1964 PA-28-180 Cherokee "B" Models are 28-671 to 28-1760 inclusive.
  - (5) Serial numbers of the 1965, 1966 and 1967 PA-28-150, PA-28-160 and PA-28-180 Cherokee "C" Models are 28-1761 to 28-4377 inclusive.
  - (6) Serial numbers of the 1968 and 1969 PA-28-180 Cherokee "D" Models are 28-4378 to 28-5600 inclusive.
  - (7) Serial numbers of the 1970 PA-28-180 Cherokee "E" Models are 28-5601 to 28-5869 inclusive.
  - (8) Serial numbers of the 1971 PA-28-180 Cherokee "F" Models are 28-7105001 to 28-7105244 inclusive.
  - (9) Serial numbers of the 1972 PA-28-180 Cherokee "G" Models are 28-7205001 to 28-7205328 inclusive.
  - (10) Serial numbers of the 1973 PA-28-180 Cherokee Challenger Models are 28-7305001 to 28-7305611 inclusive, and 28-13.

(SEE NOTE)

- (11) Serial numbers of the 1974 PA-28-180 Cherokee Archer Models are 28-7405001 to 28-7405290 inclusive.
- (12) Serial numbers of the 1975 PA-28-180 Cherokee Archer Models are 28-7505001 to 28-7505261 inclusive.
- (13) Serial numbers of the 1965, 1966, 1967 and 1968 PA-28-140 Cherokee Models are 28-20002 to 28-24999 inclusive.
- (14) Serial numbers of the 1969 PA-28-140 Cherokee "B" Models are 28-25001 to 28-26400 inclusive.
- (15) Serial numbers of the 1970 PA-28-140 Cherokee "C" Models are 28-26401 to 28-26956 inclusive.
- (16) Serial numbers of the 1971 PA-28-140 Cherokee "D" Models are 28-7125001 to 28-7125651 inclusive.
- (17) Serial numbers of the 1972 PA-28-140 Cherokee "E" Models are 28-7225001 to 28-7225612 inclusive.
- (18) Serial numbers of the 1973 PA-28-140 Cherokee Cruiser Models are 28-7325001 to 28-7325684 inclusive.
- (19) Serial numbers of the 1974 PA-28-140 Cherokee Cruiser Model are 28-7425001 to 28-7425454 inclusive.
- (20) Serial numbers of the 1975 PA-28-140 Cherokee Cruiser Models are 28-7525001 to 28-7525350 inclusive.
- (21) Serial numbers of the 1976 PA-28-140 Cherokee Cruiser Models are 28-7625001 to 28-7625275 inclusive.
- (22) Serial numbers of the 1977 PA-28-140 Cherokee Cruiser Models are 28-7725001 to 28-7725290 inclusive.
- (23) Serial numbers of the 1964, 1965 and 1966 PA-28-235 Cherokee Models are 28-10003 to 28-10719 inclusive.
- (24) Serial numbers of the 1967 and 1968 PA-28-235 Cherokee "B" Models are 28-10720 to 28-11039 inclusive.
- (25) Serial numbers of the 1969 PA-28-235 Cherokee "C" Model are 28-11040 to 28-11300 inclusive.
- (26) Serial numbers of the 1970 PA-28-235 Cherokee "D" Models are 28-11301 to 28-11393 inclusive.
- (27) Serial numbers of the 1971 PA-28-235 Cherokee "E" Models are 28-7110001 to 28-7110042 inclusive.
- (28) Serial numbers of the 1972 PA-28-235 Cherokee "F" Models are 28-7210001 to 28-7210033 inclusive.
- (29) Serial numbers of the 1973 PA-28-235 Cherokee Charger Models are 28-7310001 to 28-7310187 inclusive, and 28-E11.

(SEE NOTE)

- (30) Serial numbers of the 1974 PA-28-235 Cherokee Pathfinder Models are 28-7410001 to 28-7410120 inclusive.
- (31) Serial numbers of the 1975 PA-28-235 Cherokee Pathfinder Models are 28-7510001 to 28-7510145 inclusive.
- (32) Serial numbers of the 1976 PA-28-235 Cherokee Pathfinder Models are 28-7610001 to 28-7610206 inclusive.
- (33) Serial numbers of the 1977 PA-28-235 Cherokee Pathfinder Models are 28-7710001 to 28-7710089 inclusive.

NOTES: 1. PA-28-180 with serial number 28-E13 and PA-28-235 with serial number 28-E11 are not referenced in the various Parts Lists throughout this catalog.

a. PA-28-180 with serial number 28-E13 is to be serviced the same as serial number 28-7305001.

b. PA-28-235 with serial number 28-E11 is to be serviced the same as serial number 28-7310001.

2. Refer to grid page (1A7) for an explanation of the various serial numbers that were used and appear on the manufacturer's identification plate.

---

## PIPER PARTS CATALOG

---

### PA-28 AND PA-28R SERIAL NUMBER INFORMATION (cont.)

- (34) Serial numbers of the 1968 and 1969 PA-28R-180 Cherokee Arrow Models are 28R-30005 to 28R-30481 inclusive, and 28R-30005 to 28R-30481 inclusive, and 28R-30483 to 28R-31250 inclusive.
- (35) Serial numbers of the 1970 PA-28R-180 Cherokee Arrow Models are 28R-31251 to 28R-31279 inclusive.
- (36) Serial numbers of the 1971 PA-28R-180 Cherokee Arrow "B" Models are 28R-7130001 to 28R-7130029 inclusive.
- (37) Serial numbers of the 1969 and 1970 PA-28R-200 Cherokee Arrow Models are 28R-30482, 28R-35001 to 28R-35830 inclusive.
- (38) Serial numbers of the 1971 PA-28R-200 Cherokee Arrow "B" Models are 28R-7135001 to 28R-7135238 inclusive
- (39) Serial numbers of the 1972 PA-28R-200 Arrow II Models are 28R-7335001 to 28R-7235330 inclusive,
- (40) Serial numbers of the 1973 PA-28R-200 Arrow II Models are 28R-7335001 to 28R-7335455 inclusive.
- (41) Serial numbers of the 1974 PA-28R-200 Arrow I Models are 28R-7435001 to 28R-7435331 inclusive.
- (42) Serial numbers of the 1975 PA-28R-200 Arrow II Models are 28R-7535001 to 28R-7535383 inclusive.
- (43) Serial numbers of the 1976 PA-28R-200 Arrow II Models are 28R-7635001 to 28R-7635545 inclusive.

NOTE: Refer to grid page (1A7) for an explanation of the various serial numbers that were used and appear on the manufacturer's identification plate.

---

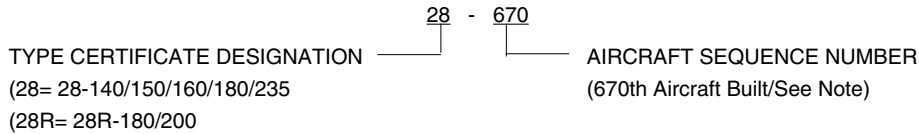
# PIPER PARTS CATALOG

---

## PA-28/28R SERIAL NUMBER EXPLANATION

For aircraft manufactured prior to 1971 model year, the Serial Number on the Manufacturer's Identification Plate is based on a 2-number set system. The first number set defines the Type Certificate Designation while the second set is the Aircraft Sequence Number.

EXAMPLE - Aircraft manufactured prior to 1971 model year.

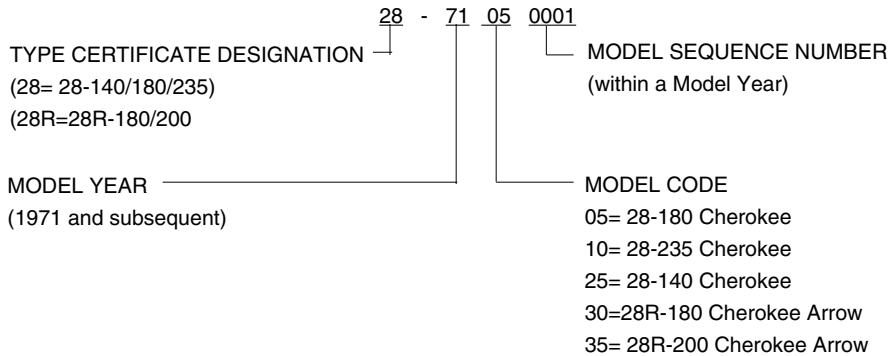


**NOTE:**

- a. Aircraft Sequence Numbers for PA-28-150/160/180 are 1 thru 5869 inclusive.
- b. Aircraft Sequence Numbers for PA-28-235 are 10003 thru 11393 inclusive.
- c. Aircraft Sequence Numbers for PA-28-140 are 20002 thru 26956 inclusive.
- d. Aircraft Sequence Numbers for PA-28R-180 and PA-28R-200 are 30005 thru 35830 inclusive.

For aircraft manufactured in 1971 model year and subsequent, the Serial Number on the Manufacturer's Identification Plate is based on a 4-number set system. The first number set defines the Type Certificate Designation, the second set is the Model Year, the third set is the Model Code, while the fourth set is the Model Sequence Number (within a model year).

EXAMPLE - Aircraft manufactured in 1971 model year and subsequent.



# PIPER PARTS CATALOG

## STANDARD PAINT CHART

EXTERIOR	MFG. NO.	PIPER PART NUMBER	
		QUART	GALLON
<b>ENAMEL</b>			
Daytona	J-9545	751 700	751 701
Bahama Blue	H-9170	751 714	751 715
Phoenix	W-3557	754 718	754 719
Portland Green	W-3558	754 724	754 725
Pontiac Red	W-3665	754 716	754 717
El Paso Brown (Metallic)	W-8433	754 737	754 738
Tampa Green (Metallic)	W-8427	754 739	754 740
Newport Blue (Metallic)	W-8430	754 741	754 742
<b>ACRYLIC LACQUER</b>			
Pontiac Red	B-7943	4175 592	1175 592
Tampa Green	B-5430	4175 360	1175 360
Newport Blue	B-5501	4175 434	1175 434
Monterey Maroon (base coat)	K-2789	4175 441	1175 441
Monterey Maroon (top coat)	B-5480	4175 437	1175 437
Juneau White	B-7784-A	4175 657	1175 657
Lakeland Blue	B-5440	4175 433	1175 433
Orlando Green	B-5490	4175 361	1175 361
Mocha Tan	B-5450	4175 627	1175 627
Denver Brown (base coat)	K-2790	4175 299	1175 299
Denver Brown (top coat)	B-5460	4175 409	1175
Madrid Red	B-5511	4175 593	1175
Dakota Black	H-6117-R	4175 373	1175 373
Beaumont Blue	B-5530	4175 435	1175 435
Bahama Blue	B-9170	4175 436	1175 436
Bimini Turquoise	B-9915	4175 438	1175 438
Nassau Turquoise	B-9914	4175 439	1175 439
Reno Gold	B-9916	4175 345	1175 345
Lincoln Gray	B-7919	4175 362	1175 362
Dallas Yellow	Y-5783	4175 701	1175 701
Ocala Orange (base coat)	P-7946	4175 499	1175 499
Ocala Orange (top coat)	C-2065-A	4175 500	1175 500
Polar Gray	Y-6100-R	4175 341	1175 341
Las Vegas Gold	G-2124-A	4175 332	1175 332
Avocado	G-2352	4175 331	1175 331
Thinner	B-5408-B	4179 102	1179 402
<b>SPRAY PAINT FOR THERMOPLASTIC INTERIOR TRIM PANELS</b>		<b>(Offered only in 16-ounce aerosol cans)</b>	
Avocado Green		766-007	
White		766-008	
Tan		766-009	
Red		766-010	
Dark Blue		766-011	
Light Blue		766-012	
Sandstone		766-013	
Gloss Black		766-014	
Dark Brown		766-015	
Brown		766-016	
Blue-Green		766-017	
Optical Flat Black		766-018	



# TABLE OF CONTENTS

FIGURE NUMBER	FIGURE TITLE	GRID NUMBER
SECTION IV TAIL SURFACES GROUP		
50	Tail Surfaces Installation.....	2K1
50A	Fin Assembly .....	2K8
50B	Rudder Assembly .....	2K12
50C	Stabilator Assembly (PA-28-150/160/180 - S/N 28-1 to 28-7205328 incl. PA-28-140 - S/N 28-20002 and up PA-28-235 - S/N 28-10003 to 28-7205328 incl., PA-28R-180 - S/N 28R-30005 to 28R-30481, 28R-30483 to 28R-7130019 incl. PA-28R-200- S/N 28R-30482 28R-35001 to 28R-7135238 incl.).....	2K14
50D	Stabilator Assembly (PA-28-180 - S/N 28-7305001 and up, PA-28-235 - S/N 28-7310001 and up, PA-28R-200 - S/N 28R-7235001 and up) .....	2K17
SECTION V FUEL SYSTEM GROUP		
51	Fuel System Installation (PA-28-140).....	2K19
52	Fuel System Installation (PA-28-150/160/180 - S/N 28-1 to 28-1760 incl.).....	2L1
53	Fuel System Installation (PA-28-150/160/180 - S/N 28-1761 and up) .....	2L7
54	Fuel System Installation (PA-28R-180/200) .....	2L12
55	Fuel System Installation (PA-28-235).....	2L16

# PIPER PARTS CATALOG

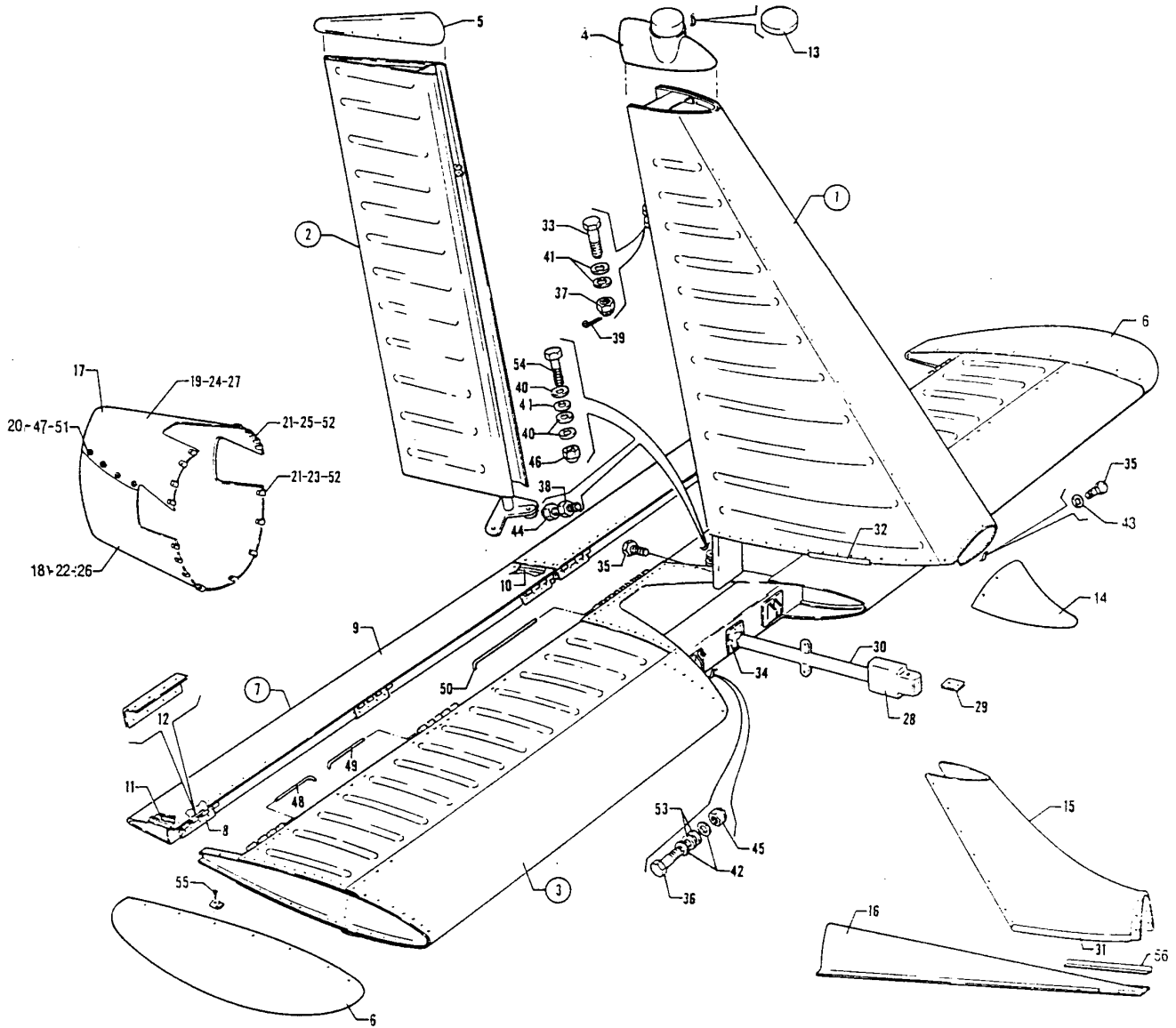


Figure 50. Tail Surfaces Installation

**PIPER PARTS CATALOG**

Figure and Index Number	Part Number	Code	NOMENCLATURE	No. Req.	SERIAL NUMBERS AFFECTED
50-	62002 68425	A B	DRAWING - Tail Surfaces Installation DRAWING - Tail Surfaces Installation		
-1	63500-00 63500-08 66975-00 66975-03	C,D C,E C,F C.G	FIN ASSEMBLY FIN ASSEMBLY FIN ASSEMBLY FIN ASSEMBLY	1 1 1 1	
			<p>A - Used on PA-28-235 with serial numbers 28-10003 to 28-7210033 inclusive. PA-28R-200 with serial numbers 28R-30482, 28R-35001 to 28R-7135238 inclusive PA-28-140, PA-28-150 and PA-28-180 airplanes.</p> <p>B - Used on PA-28-235 with serial number 28-7310001 and up, and PA-28R-200 with serial numbers 28R-7235001 and up.</p> <p>C - See Figure 50A for component parts.</p> <p>D - Used on PA-28-150, PA-28-160 and PA-28-180 with serial number 28-1 to 28-1980 inclusive, PA-28-140 with serial number 28-20002 to 28-20481 inclusive, and PA-28-235 with serial numbers 28-10003 to 28-10562 inclusive.</p> <p>E - Used on PA-28-150, PA-28-160 and PA-28-180 with serial number 28-1981 to 28-5600 inclusive, PA-28-140 with serial numbers 28-20482 to 28-26400 inclusive, PA-28-235 with serial numbers 28-10563 to 28-11300 inclusive, PA-28R-180 with serial number 28R-30005 to 28R-30481 inclusive, 28R-30483 to 28R-31250 inclusive, and PA-28R-200 with serial numbers 28R-30482, 28R-35001 to 28R-35600 inclusive.</p> <p>F - Used on PA-28-140 with serial number 28-26401 to 28-7325684 inclusive, PA-28-180 with serial numbers 28-5601 to 28-7305611 inclusive, PA-28R-180 with serial numbers 28R-31251 to 28R-7130019 inclusive. PA-28R-200 with serial numbers 28R-35601 to 28R-7335455 inclusive, and PA-28-235 with serial numbers 28-11301 to 28-7310187 inclusive</p> <p>G- Used on PA-28-140 with serial numbers 28-7425001 and up, PA-28-180 with serial numbers 28-7405001 and up, PA-28-235 with serial numbers 28-7410001 and up, and PA-28R-200 with serial numbers 28R-7435001 and up</p>		

When ordering, always specify Part Number, Description, and Serial Number of Aircraft

**PIPER PARTS CATALOG**

Figure and Index Number	Part Number	Code	NOMENCLATURE	No. Req.	SERIAL NUMBERS AFFECTED
50-2	63540-00	A,K	RUDDER ASSEMBLY		
	65342-00	B,K	RUDDER ASSEMBLY	1	28-10003 to 28-10562 inclusive
	63540-02	C,K	RUDDER ASSEMBLY	1	
	66342-02	D,K	RUDDER ASSEMBLY	1	
-3	63960-00	A,H	STABILATOR ASSEMBLY	1	
	63460-00	E,H	STABILATOR ASSEMBLY	1	
	63460-02	F,H	STABILATOR ASSEMBLY	1	
	68426-00	G,J	STABILATOR ASSEMBLY	1	
			<p>A - Used on PA-28-150, PA-28-160 and PA-28-180 with serial number 28-1 to 28-1980 inclusive and PA-28- 140 with serial number 28-20002 to 28-20481 inclusive.</p> <p>B - Used on PA-28-235 airplanes only.</p> <p>C - Used on PA-28-150, PA-28-160 and PA-28-180 with serial number 28-1981 to 28-7305611 inclusive and PA-28-140 with serial numbers 28-20482 to 28-7325684 inclusive.</p> <p>D - Used on PA-28-140 with serial number 28-7425001 and up, PA-28-180 with serial numbers 28-7405001 and up, PA-28-235 with serial numbers 28-10563 and up, PA-28R-180 And PA-28R-200 airplane.</p> <p>E - Used on PA-28-150, PA-28-160 and PA-28-180 with serial number 28-1981 to 28-7205328 inclusive and PA-28-140 with serial number 28-20482 and up.</p> <p>F - Used on PA-28-235 with serial numbers 28-10563 to 28-7205328 inclusive, PA-28R-180 with serial number 28R-30005 to 28R-7130019 inclusive, and PA-28R-200 with serial number 28R-30482, 28R-35001 to 28R-7135238 inclusive</p> <p>G - Used on PA-28-180 with serial number 28-7305001 and up, PA-28-235 with serial number 28-7310001 and up, and PA-28R-200 with serial numbers 28R-7235001 and up,</p> <p>H - See Figure 50C for Component parts.</p> <p>J - See Figure 50D for Component parts.</p> <p>K- See Figure 50B for component parts.</p>		

When ordering, always specify Part Number, Description, and Serial Number of Aircraft

**PIPER PARTS CATALOG**

Figure and Index Number	Part Number	Code	NOMENCLATURE	No. Req.	SERIAL NUMBERS AFFECTED
50-4	63514-06	A	TIP - Fin (for rotating beacon)	1	28-1 to 28-534, 28-1231 and up  28-535 to 28-1230 inclusive
	96709-00	B,C	TIP - Fin (for rotating beacon)	1	
	96713-02	D	TIP - Fin (for Strobe light)	1	
	65345-03	E	TIP - Fin (for rotating beacon)	1	
	99035-03	F	TIP - Fin (for strobe light)	1	
-5	63541-00	A	TIP - Rudder (less tail light)	1	
	99607-00	B,C	TIP - Rudder (less tail light)	1	
	99868-00	F	TIP - Rudder (less tail light)	1	
-6	63584-06	G	TIP - Stabilator	2	
	63584-10	H	TIP - Stabilator	2	
	63589-00	G	TIP - Stabilator	2	
	65300-00	J	TIP - Stabilator	2	
			<p>A - Used on PA-28-140 with serial numbers 28-20002 to 28-7125651 inclusive, and 28-7225001 to 28-7325684 inclusive on Flite Liner Model, PA-28-150, PA-28-160 and PA-28-180 with serial numbers 28-1 to 28-7106244 inclusive.</p> <p>B - Not used on PA-28-140 Flite Liner Model.</p> <p>C - Used on PA-28-140 with serial number 28-7225001 to 28-7325684 inclusive, and PA-28-180 with serial number 28-7205001 to 28-7305611 incl.</p> <p>D - Used on PA-28-140 with serial number 28-26401 to 28-7325684 incl., and PA-28-180 with serial number 28-5601 to 28-7305611 inclusive.</p> <p>E - Used on PA-28-140 and PA-28-140 Flite Liner Model with serial number 28-7425001 and up, PA-28-180 with serial numbers 28-7405001 and up, PA-28-235 with serial numbers 28-10003 and up, PA-28R-180 and PA-28R-200 airplane.</p> <p>F - Used on PA-28-140 with serial number 28-7425001 and up, PA-28-180 with serial numbers 28-7406001 and up, PA-28-235 with serial number 28-11301 and up, PA-28R-180 with serial number 28R-31251 and up, and PA-28R-200 with serial numbers 28R-35601 and up.</p> <p>G - Used on PA-28-140, PA-28-150, PA-28-160 and PA-28-180 airplanes only.</p> <p>H - Used on PA-28-235 with serial numbers 28-7310001 and up, and PA-28R-200 with serial numbers 28R-7235001 and up.</p> <p>J - Used on PA-28-235 with serial numbers 28-10003 to 28-7210033 inclusive, PA-28R-180 with serial numbers 28R-30005 to 28R-7130019 inclusive, and PA-28R-200 with serial numbers 28R-30482, 28R-35001 to 28R-7135238 inclusive.</p>		

When ordering, always specify Part Number, Description, and Serial Number of Aircraft

## PIPER PARTS CATALOG

Figure and Index Number	Part Number	Code	NOMENCLATURE	No. Req.	SERIAL NUMBERS AFFECTED
50-7	63585-00	G	TAB - Stabilator- trim, left	1	
	63585-01	G	TAB - Stabilator trim, right	1	
-8	63560-02		HINGE - Half, stabilator tab	3	
-9	63586-00	G	SKIN - Stabilator trim tab, LH	1	
	63586-01	G	SKIN - Stabilator trim tab, RH	1	
-10	63587-00		RIB - Inboard	2	
-11	63587-01		RIB - Outboard	2	
-12	63588-00		DOUBLER	3	
-13	63264-00	E	COVER - fin tip	1	
-14	63517-00	D	FAIRING - Fin	1	
-15	99619-02	C	FAIRING - Fin, aft	1	
-16	99621-00	C,F	FAIRING - Fin, forward	1	
-17	62629-00	A	FAIRING ASSEMBLY - Tail cone	1	
-18	62629-02	A	FAIRING ASSEMBLY - Lower	1	
-19	62629-03	A	FAIRING ASSEMBLY - Upper	1	
-20	414 763	A,W	SCREW - (AN507-832R8)	10	
	494 081	A,W	WASHER - (A3135-.017-1)	10	
	406 709	A	NUT - (PS10062-3-12)	10	
-21	406 709	A	NUT - (PS10062-3-12)	16	
-22	65715-04	B	FAIRING ASSEMBLY - Lower	1	
-23	406 709	B	NUT- (PS10062-3-12)	18	
-24	65715-03	B	FAIRING ASSEMBLY - Upper	1	
-25	406 709	R	NUT - (PS10062-3-12)	8	
			A - Used on PA-28-140 with serial numbers 28-20002 to 28-21595 inclusive, PA-28-150, PA-28-160 and PA-28-180 with serial numbers 28-1 to 28-3377 inclusive, and PA-28-235 with serial numbers 28-10003 to 28-10735 inclusive.		
			B - Used on PA-28-140 with serial numbers 28-215963 to 28-26054 inclusive, PA-28-150, PA-28-160 and PA-28-180 with serial numbers 28-3378 to 28-5445 inclusive, PA-28-235 with serial numbers 28-10736 to 28-11253 inclusive, PA-28R-180 with serial numbers 28R-30005 to 28R-31111 inclusive, and PA-28R-200 with serial numbers 28R-30482, 28R-35001 to 28R-35315 inclusive.		
			C - Used on PA-28-140 with serial numbers 28-7225001 and up, PA-28-180 with serial numbers 28-7205001 and up. PA-28-235 with serial numbers 28-720001 and up, and PA-28R-200 with serial numbers 28R-7235001 and up.		
			D - Used on PA-28-140 with serial numbers 28-20002 to 28-7125651 inclusive, and 28-7225001 and up on Flite Liner Model. PA-28-150, PA-28-160 and PA-28-180 with serial numbers 28-1 to 28-7105244 inclusive, PA-28R-180 with serial numbers 28R-30005 to 28R-7130019 inclusive, and PA-28R-200 with serial numbers 28R-35001 to 28R-7135238 inclusive.		
			E - Used when rotating beacon is not installed.		
			F - Not used on PA-28-140 Flite Liner Model.		
			G- Reference latest revision to Service Letter 450 on Stabilator Trim Installation Kit Numbers 756 896 and 756 930 for PA-28 aircraft with serial numbers 28-1 to 28-1410.		
			W - These parts must be ordered from Service Spares Department, Piper Aircraft, Vero Beach, Florida.		

When ordering, always specify Part Number, Description, and Serial Number of Aircraft

**PIPER PARTS CATALOG**

Figure and Index Number	Part Number	Code	NOMENCLATURE	No. Req.	SERIAL NUMBERS AFFECTED
50-26	66822-07	C	FAIRING - Lower	1	
-27	66822-08	C	FAIRING - Upper	1	
-28	99799-02	D	BALANCE WEIGHT ASSEMBLY - Stabilator	1	
	99802-02	E	BALANCE WEIGHT ASSEMBLY - Stabilator	1	
	99803-03	F	BALANCE WEIGHT ASSEMBLY - Stabilator	1	
-29	96564-00	G	* PLATE - Stabilator balance	AR	
-30	69623-04	D	TUBE ASSEMBLY - Stabilator	1	
	69623-02	E	TUBE ASSEMBLY - Stabilator	1	
	69624-02	F	TUBE ASSEMBLY - Stabilator	1	
-31	63186-21	A,B	MOULDING - Extruded	2	
-32	63186-02		MOULDING - Extruded	2	
-33	400 056	W	BOLT - (AN3-11)	1	
-34	400 450	W	BOLT - (AN3- 17A)	2	
-35	400 003	W	BOLT - (AN4-6A)	4	
	690 611	W	WASHER - (NAS1149F0463P)	8	
	404 530	W	NUT - (MS21042-4)	8	
-36	402 680		BOLT - (NAS1104-17)	2	
-37	404 100	W	NUT - Castle (AN310-3)	1	
-38	404 224	W	NUT - (AN315-3R)	2	
-39	424 051	W	COTTER PIN - (MS24665-132)	1	
-40	690 612	W	WASHER - (NAS1149F0363P)	2	
-41	407 584	W	WASHER - (AN960-10L)	6	
-42	690 611	W	WASHER - (NAS1149F0463P)	4	
			A - Not used on PA-28-140 Flite Liner Model-		
			B - Used on PA-28-140 with serial numbers 28-7225001 and up. PA-28-180 with serial numbers 28-7205001 and up, PA-28-235 with serial numbers 28-7210001 and up. and PA-28R-200 with serial numbers 28R-7235001 and up.		
			C - Used on PA-28-140 with serial numbers 28-26055 and up, PA-28-180 with serial numbers 28-5446 and up, PA-28-235 with serial numbers 28-11254 and up, PA-28R-180 with serial numbers 28R-31112 to 28R-7130019 inclusive, and PA-28R-200 with serial numbers 28R-35316 and up.		
			D - Used on PA-28-140 with serial numbers 28-20002 and up, PA-28-150, PA-28-160 and PA-28-180 with serial numbers 28-1 to 28-7205328 inclusive.		
			E - Used on PA-28-235 with serial numbers 28-10003 to 28-7210033 inclusive. PA-28R-180 with serial numbers 28R-30005 to 28R-7130019 inclusive, and PA-28R-200 with serial numbers 28R-30482, 28R-35001 to 28R-7135238 inclusive		
			F - Used on PA-28-180 with serial numbers 28-7305001 and up. PA-28-235 with serial numbers 28-7310001 and up, and PA-28R-200 with serial numbers 28R-7235001 and up.		
			G - Reference latest revision to Service Bulletin 856 on Stabilator Attach Fitting Corrosion Inspection for PA-28-140 aircraft with serial numbers 28-20001 thru 28-7725290 inclusive, PA-28-150/160/180 using serial numbers 28-01 thru 28-7505259 inclusive and 28-E13, PA-28R-180 with serial numbers 28R-30001 thru 28R-7130013 inclusive, PA-28R-200 with serial numbers 28R-25001 thru 28R-7837319 inclusive and PA-28-235 with serial numbers 28-10001 thru 28-7710089 inclusive and 28-E11.		
			W - These parts must be ordered from Service Spares Department, Piper Aircraft, Vero Beach, Florida.		

When ordering, always specify Part Number, Description, and Serial Number of Aircraft

## PIPER PARTS CATALOG

Figure and Index Number	Part Number	Code	NOMENCLATURE	No. Req.	SERIAL NUMBERS AFFECTED
50-43	400 003	W	BOLT - (AN4-6A)	1	
	690 611	W	WASHER - (NAS1149F0463P)	2	
-44	553 261		BOLT - (PL428-3-7)	2	
-45	406 945		NUT - (NAS679A4W)	2	
-46	404 526	W	NUT - (MS21042-3)	3	
-47	414 763	A,W	SCREW - (AN507-832R8)	10	
	494 101	A,W	WASHER - (A3135- 017-24A)	10	
-48	62002-02		PIN - Hinge	2	
-49	62002-03		PIN - Hinge	2	
-50	62002-04		PIN - Hinge	1	
-51	414 783	B	SCREW - (MS24693-C51)	10	
	494 101	B,W	WASHER - (A3135- 017-24A)	10	
	477 816	B	NUT - (PS1 0062-5-9)	10	
-52	415 179	B	SCREW - (AN526C-832R8)	16	
	477 816	B	NUT - (PS10062-5-9)	16	
-53	690 613	W	WASHER - (NAS1149F0432P)	AR	
-54	401 269	W	BOLT - (AN3-10A)	1	
-55	419 920	W	SCREW - (Type "B", truss head 8 x 1/2 L)	28	28-1 to 28-1230 inclusive
	510 058		SCREW - (NAS514P832-8)	28	28-1231 and up
	406 372	W	NUT - (A1784-6Z3)	28	28-1 to 28-1230 inclusive
	406 709		NUT - (PS10062-3-12)	28	28-1231 and up
	494 071	W	WASHER - (A3236-012-1)	28	28-1 to 28-1230 inclusive
	494 101	W	WASHER - (A3135-.017-24A)	28	28-1231 and up
-56	99591-00	C	ANGLE - Dorsal fin fitting, left	1	
	99591-01	C	ANGLE - Dorsal fin fitting, right	1	
<p>A - Used on PA-28-140 with serial numbers 28-21596 to 28-26054 inclusive, PA-28-150, PA-28-160 and PA-28-180 with serial numbers 28-3378 to 28-5445 inclusive, PA-28-235 with serial numbers 28-10736 to 28-11253 inclusive, PA-28R-180 with serial numbers 28R-30005 to 28R-31111 inclusive, and PA-28R-200 with serial numbers 28R-30482, 28R-35001 to 28R-35315 inclusive.</p> <p>B - Used on PA-28-140 with serial numbers 28-26055 and up, PA-28-180 with serial numbers 28-5466 and up, PA-28-235 with serial numbers 28-11254 and up, PA-28R-180 with serial numbers 28R-31112 to 28R-7130019 inclusive, and PA-28R-200 with serial numbers 28R-35316 and up.</p> <p>C - Used on PA-28-140 with serial numbers 28-7225001 and up. PA-28-180 with serial numbers 28-7205001 and up. PA-28-235 with serial numbers 28-7210001 and up. and PA-28R-200 with serial numbers 28R-7235001 and up.</p> <p>W - These parts must be ordered from Service Spares Department, Piper Aircraft, Vero Beach, Florida.</p>					

When ordering, always specify Part Number, Description, and Serial Number of Aircraft



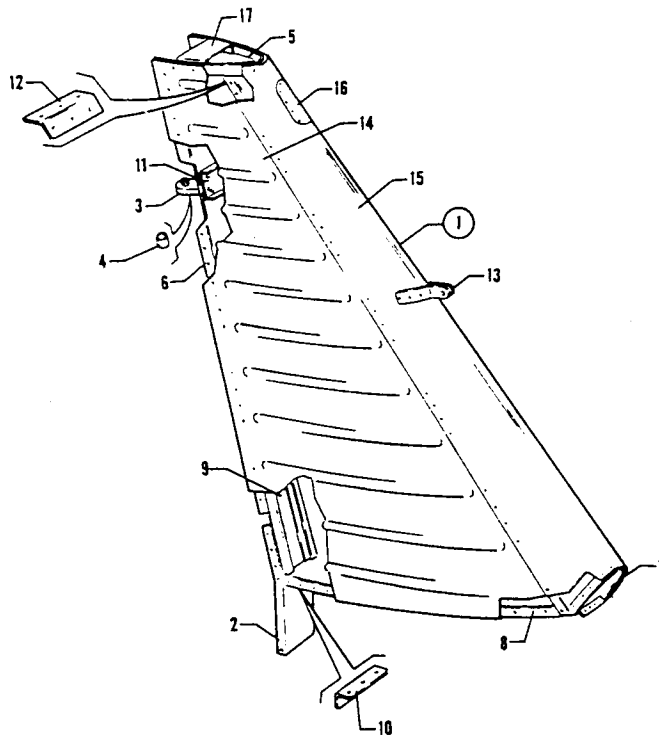


Figure 50A. Fin Assembly

**PIPER PARTS CATALOG**

Figure and Index Number	Part Number	Code	NOMENCLATURE	No. Req.	SERIAL NUMBERS AFFECTED
50A-1	63500-00	A	FIN ASSEMBLY	1	
	63500-08	B	FIN ASSEMBLY	1	
	66975-00	C	FIN ASSEMBLY	1	
	66975-03	D	FIN ASSEMBLY	1	
-2	63501-00	E	FITTING - Fin root	1	
	63501-03	F	FITTING - Fin root	1	
-3	63502-00		HINGE ASSEMBLY - Fin	1	
-4	452 387		BEARING - (KP3A)	1	
<p>A - Used on PA-28-150, PA-28-160 and PA-28-180 with serial numbers 28-1 to 28-1980 inclusive, PA-28-140 with serial numbers 28-20002 to 28-20481 inclusive, and PA-28-235 with serial numbers 28-10003 to 28-10562 inclusive.</p> <p>B - Used on PA-28-150, PA-28-160 and PA-28-180 with serial number 28-1981 to 28-5600 inclusive, PA-28-140 with serial numbers 28-20482 to 28-26400 inclusive, PA-28-235 with serial numbers 28-10563 to 28-11300 inclusive, PA-28R-180 with serial numbers 28R-30005 to 28R-30481 inclusive, 28R-30483 to 28R-31250 inclusive, and PA-28R-200 with serial numbers 28R-30482, 28R-35001 to 28R-35600 inclusive.</p> <p>C - Used on PA-28-140 with serial numbers 28-26401 to 28-73256384 inclusive, PA-28-180 with serial numbers 28-5601 to 28-7305611 incl., PA-28R-180 with serial numbers 28R-31251 to 28R-7130019 inclusive, PA-28R-200 with serial numbers 28R-35601 to 28R-7335455 inclusive, and PA-28-235 with serial number 28-11301 to 28-7310187 inclusive.</p> <p>D - Used on PA-28-140 with serial number 28-7425001 and up, PA-28-180 with serial number 28-7405001 and up, PA-28-235 with serial numbers 28-7410001 and up, and PA-28R-200 with serial number 28R-7435001 and up.</p> <p>E - Used on PA-28-140 with serial numbers 28-20002 to 28-25301 inclusive, PA-28-180 with serial numbers 28-671 to 28-5227 inclusive, PA-28-235 with serial number 28-10003 to 28-11223 inclusive. PA-28R-180 with serial numbers 28R-30005 to 28R-30481 inclusive, 28R-30483 to 28R-31074 inclusive, PA-28-150 and PA-28-160 airplanes.</p> <p>F - Used on PA-28-140 with serial numbers 28-25302 and up, PA-28-180 with serial numbers 28-5228 and up, PA-28-235 with serial numbers 28-11224 and up, PA-28R-180 with serial numbers 28R-31075 and up, and PA-28R-200 with serial numbers 28R-30482, 28R-35001 and up.</p>					

When ordering, always specify Part Number, Description, and Serial Number of Aircraft

**PIPER PARTS CATALOG**

Figure and Index Number	Part Number	Code	NOMENCLATURE	No. Req.	SERIAL NUMBERS AFFECTED
50A-5	63503-00	C	RIB - Fin tip	1	
	68972-00	D	RIB ASSEMBLY - Fin tip	1	
-6	63504-00		SPAR - Fin rear	1	
-7	63505-00	C	RIB - Fin nose	1	
	66947-00	A	RIB ASSEMBLY - Fin nose	1	
	79268-00	B	RIB - Fin nose	1	
-8	63506-00		RIB - Fin root	1	
-9	63507-00		STIFFENER - Fin spar, right	1	28-1 to 28-1374 inclusive
	63507-01		STIFFENER - Fin spar, left	1	28-1 to 28-1374 inclusive
	65034-00		STIFFENER - Fin spar, left	1	28-1375 and up
	65034-01		STIFFENER - Fin spar, right	1	28-1375 and up
-10	63508-00		ANGLE - Fin rib attachment	1	
-11	63509-00		DOUBLER ASSEMBLY - Fin	1	
-12	63510-00		CLIP - Fin	1	
-13	63511-00	C	FITTING - Fin antenna attachment, left	1	
	63511-01	C	FITTING - Fin antenna attachment, right	1	
			A - Used on PA-28-140 with serial numbers 28-26401 to 28-7325684 inclusive, PA-28-180 with serial numbers 28-5601 to 28-7305611 inclusive, PA-28R-180 with serial number 28R-31251 to 28R-7130019 inclusive, PA-28R-200 with serial numbers 28R-35601 to 28R-7335455 inclusive, and PA-28-235 with serial numbers 28-11301 to 28-7310187 inclusive.		
			B - Used on PA-28-140 with serial numbers 28-7425001 and up, PA-28-180 with serial numbers 28-7405001 and up, PA-28-235 with serial numbers 28-7410001 and up, and PA-28R-200 with serial numbers 28R-7435001 and up.		
			C - Used on PA-28-140 with serial number 28-20002 to 28-26400 inclusive, PA-28-150, PA-28-160 and PA-28-180 with serial numbers 28-1 to 28-5600 inclusive, PA-28R-180 with serial number 28R-30005 to 28R-30481 inclusive, 28R-30483 to 28R-31250 inclusive, PA-28R-200 with serial numbers 28R-30482, 28R-35001 to 28R-35600 inclusive, and PA-28-235 with serial numbers 28-10003 to 28-11300 inclusive.		
			D - Used on PA-28-140 with serial numbers 28-26401 and up, PA-28-180 with serial numbers 28-5601 and up, PA-28R-180 with serial numbers 28R-31251 and up. PA-28R-200 with serial numbers 28R-35601 and up, and PA-28-235 with serial number 28-11301 and up.		

When ordering, always specify Part Number, Description, and Serial Number of Aircraft

**PIPER PARTS CATALOG**

Figure and Index Number	Part Number	Code	NOMENCLATURE	No. Req.	SERIAL NUMBERS AFFECTED
50A-14	63512-00	D,F	SKIN - Fin, left	1	
	63512-01	D,F	SKIN - Fin, right	1	
	63398-00	C,E	SKIN - Fin, left	1	
	63398-01	C,E	SKIN - Fin, right	1	
-15	63513 00	B,F	SKIN - Leading edge, fin	1	
	66964-00	A	SKIN ASSEMBLY - Fin nose (complete)	1	
-16	66964-02	A	COVER - Air inlet	1	
-17	63515-00		BRACKET- Fin antenna	1	
			<p>A - Used on PA-28-140 with serial numbers 28-26401 and up, PA-28-180 with serial numbers 28-5601 and up, PA-28R-180 with serial numbers 28R-31251 and up, PA-28R-200 with serial number 28R-35601 and up and PA-28-235 with serial numbers 28-11301 and up.</p> <p>B- Used on PA-28-150, PA-28-160 and PA-28-180 with serial numbers 28-1981 to 28-5600 inclusive, PA-28-140 with serial number 28-20482 to 28-26440 inclusive, PA-28-235 with serial numbers 28-10563 to 28-11300 inclusive, PA-28R-180 with serial numbers 28R-30005 to 28R-30481 inclusive, 28R-30483 to 28R-31250 inclusive, and PA-28R-200 with serial numbers 28R-30482, 28R-35001 to 28R-35600 inclusive.</p> <p>C - Used on PA-28-150, PA-28-160 and PA-28-180 with serial number 28-1981 and up, and PA-28-140 with serial numbers 28-20482 and up</p> <p>D- Used on PA-28-235 with serial numbers 28-10003 to 28-10562 inclusive.</p> <p>E - Used on PA-28-235 with serial numbers 28-10563 and up, PA-28R-180 and PA-28R-200 Airplanes.</p> <p>F - Used on PA-28-150, PA-28-160 and PA-28-180 with serial numbers 28-1 to 28-1980 inclusive, and PA-28-140 with serial numbers 28-20002 to 28-20481 inclusive</p>		

When ordering, always specify Part Number, Description, and Serial Number of Aircraft

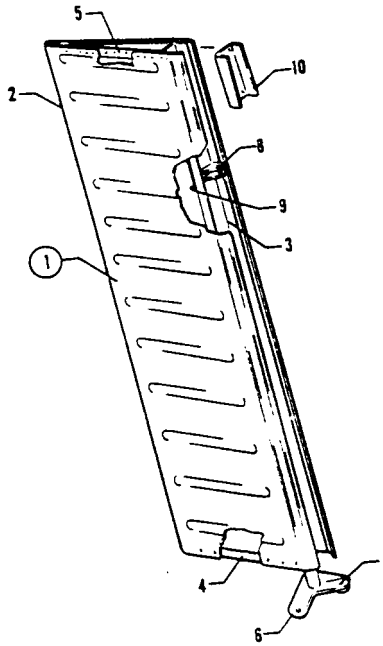


Figure 50B. Rudder Assembly

**PIPER PARTS CATALOG**

Figure and Index Number	Part Number	Code	NOMENCLATURE	No. Req.	SERIAL NUMBERS AFFECTED
50B-1	63540-00	A	RUDDER ASSEMBLY	1	28-10003 to 28-10562 inclusive
	65342-00	B	RUDDER ASSEMBLY	1	
	63540-02	C	RUDDER ASSEMBLY	1	
	65342-02	D	RUDDER ASSEMBLY	1	
-2	63542-00	A	SKIN - Rudder	1	28-10003 to 28-10562 inclusive
	63542-02	B	SKIN - Rudder	1	
	63396-00	E	SKIN - Rudder	1	
-3	63543-00		SPAR - Rudder	1	
-4	63544-00		RIB - Rudder root, bottom	1	
-5	63545 00		RIB - Rudder tip, top	1	
-6	63546-00		HORN ASSEMBLY - Rudder.	1	
-7	452 387		BEARING - (KP3A)	1	
-8	63550-00		FITTING - Rudder hinge	1	
-9	63551-00	F	DOUBLER ASSEMBLY - Rudder hinge	1	28-10003 to 28-10562 inclusive
	65340-00	B	DOUBLER ASSEMBLY - Rudder hinge	1	
	63395-00	D	DOUBLER ASSEMBLY - Rudder hinge	1	
-10	65341-00	G	DOUBLER - Rudder, top	1	
			<p>A - Used on PA-28-150, PA-28-160 and PA-28-180 with serial numbers 28-1 to 28-1980 inclusive, and PA-28-140 with serial numbers 28-20002 to 28-20481 inclusive</p> <p>B - Used on PA-28-235 airplanes only.</p> <p>C - Used on PA-28-150, PA-28-160 and PA-28-180 with serial numbers 28-1981 to 28-7205611 inclusive, and PA-28-140 with serial numbers 28-20482 to 28-7325684 inclusive.</p> <p>D - Used on PA-28-140 with serial numbers 28-7425001 and up, PA-28-180 with serial numbers 28-7405001 and up, PA-28-235 with serial numbers 28-10563 and up, PA-28R-180 and PA-28R-200 airplanes.</p> <p>E - Used on PA-28-150, PA-28-160 and PA-28-180 with serial numbers 28-1981 and up, PA-28-140 with serial numbers 28-20482 and up, PA-28-235 with serial numbers 28-10563 and up, PA-28R-180 and PA-28R-200 airplanes.</p> <p>F - Used on PA-28-140 with serial numbers 28-20002 to 28-7325684 inclusive, PA-28-150, PA-28-160 and PA-28-180 with serial numbers 28-1 to 28-7305611 inclusive.</p> <p>G - Used on PA-28-140 with serial numbers 28-7425001 and up, PA-28-180 with serial numbers 28-7405001 and up, PA-28-235 with serial numbers 28-10003 and up, PA-28R-180 and PA-28R-200 airplanes.</p>		

When ordering, always specify Part Number, Description, and Serial Number of Aircraft

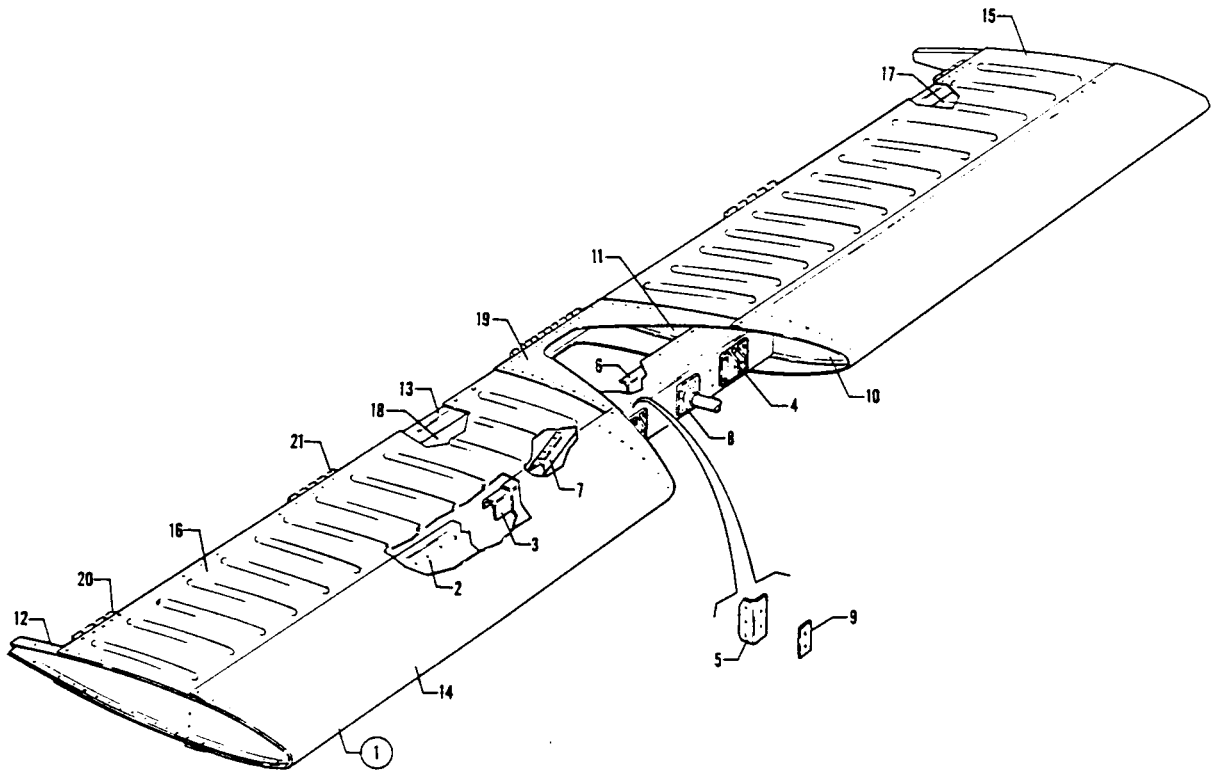


Figure 50C. Stabilator Assembly  
(See Code "A" on Next Page  
for Airplane Effectivity)

**PIPER PARTS CATALOG**

Figure and Index Number	Part Number	Code	NOMENCLATURE	No. Req.	SERIAL NUMBERS AFFECTED
50C-1	63460-00	B	STABILATOR ASSEMBLY	1	28-10003 to 28-10562 inclusive
	63560-06	C	STABILATOR ASSEMBLY	1	
-2	63460-00	O	STABILATOR ASSEMBLY	1	28-10003 to 28-10562 inclusive
	63460-02	E	STABILATOR ASSEMBLY	1	
	63561-00	B	SPAR - Stabilator, main	1	
	63561-02	C	SPAR - Stabilator, main	1	
	63561-03	D	SPAR - Stabilator, main	1	
	63561-04	E	SPAR - Stabilator, main	1	
-3	63562-00	F	CAP - Stabilator spar	2	
-4	63563-00	F	FITTING - Stabilator hinge	2	
-5	63564-00	F	ANGLE	2	
-6	63565-02		CLOSURE	1	
<p>A - Used on PA-28-150, PA-28-160 and PA-28-180 with serial numbers 28-1 to 28-7205328 inclusive, PA-28-140 with serial numbers 28-20002 and up, PA-28-235 with serial numbers 28-10003 to 28-7205328 inclusive, PA-28R-180 with serial numbers 28R-30005 to 28R-30481 inclusive, 28R-30483 to 28R-7130019 inclusive, and PA-28R-200 with serial numbers 28R-30482, 28R-35001 to 28R-7135238 inclusive.</p> <p>B - Used on PA-28-150, PA-28-160 and PA-28-180 with serial numbers 28-1 to 28-1980 inclusive, and PA-28-140 with serial numbers 28-20002 to 28-20481 inclusive.</p> <p>C - Used on PA-28-235 airplanes only.</p> <p>D - Used on PA-28-150, PA-28-160 and PA-28-180 with serial numbers 28-1981 to 28-7205328 inclusive, and PA-28-140 with serial numbers 28-20482 and up</p> <p>E - Used on PA-28-235 with serial numbers 28-10563 to 28-7210023 inclusive, PA-28R-180 with serial numbers 28R-30005 to 28R-7130019 inclusive. and PA-28R-200 with serial numbers 28R-30482, 28R-35001 to 28R-7135238 inclusive.</p> <p>F - Used on PA-28-140 with serial number 28-20002 and up, PA-28-150, PA-28-160 and PA-28-180 with serial numbers 28-1 to 28-7205328 inclusive, PA-28R-180 with serial numbers 28R-30005 to 28R-7130019 inclusive, PA-28R-200 with serial numbers 28R-30482, 28R-35001 to 28R-7135238 inclusive, and PA-28-235 with serial numbers 28-10003 to 28-7210033 inclusive.</p>					

When ordering, always specify Part Number, Description, and Serial Number of Aircraft



**PIPER PARTS CATALOG**

Figure and Index Number	Part Number	Code	NOMENCLATURE	No. Req.	SERIAL NUMBERS AFFECTED
50C-7	63566-00	D	STIFFENER - RH top, LH bottom	2	
	63566-02	B	STIFFENER - RH top, LH bottom	2	
	63566-01	D	STIFFENER - RH bottom, LH top	2	
	63566-03	B	STIFFENER - RH bottom, LH top	2	
-8	63567-03	C	FITTING - Balance weight attachment	2	
-9	63568-00	C	SHIM - Spar	2	
-10	63569-00	C	RIB - Stabilator nose	2	
-11	63570-00	C	RIB - Stabilator aft	2	
-12	63571-00	C	RIB-Tip	2	
-13	63572-00	C	SPAR- Stabilator, rear	1	
-14	63573-00	C	SKIN - Leading edge, left	1	
	63573-01	C	SKIN - Leading edge, right	1	
-15	63574-00	D	SKIN - Stabilator, aft top, left	1	
	63392-00	B	SKIN - Stabilator, aft top, left	1	
-16	63574-01	D	SKIN - Stabilator, aft top, right	1	
	63392-01	B	SKIN - Stabilator, aft top, right	1	
-17	63574-02	D	SKIN - Stabilator, aft bottom, left	1	
	63393-00	B	SKIN -Stabilator, aft bottom, left	1	
-18	63574-03	D	SKIN -Stabilator, aft bottom, right	1	
	63393-01	B	SKIN - Stabilator, aft bottom, right	1	
-19	63575-00	C	SKIN - Center	2	
-20	63560-02	C	HINGE - Extruded, outboard	2	
-21	63560-03	C	HINGE - Extruded, inboard and center	4	
			<p>A- Used on PA-28-150, PA-28-160 and PA-28-180 with serial numbers 28-1 to 28-7205328 inclusive, PA-28-140 with serial numbers 28-20002 and up, PA-28-235 with serial numbers 28-10003 to 28-7205328 inclusive, PA-28R-180 with serial numbers 28R-30005 to 28R-30481, 28R-30483 to 28R-7130019 inclusive, and PA-28R-200 with serial numbers 28R-30482,28R-35001 to 28R-7135238 inclusive.</p> <p>B - Used on PA-28-140 with serial numbers 28-20482 and up, PA-28-150, PA-28-160 and PA-28-180 with serial numbers 28-1981 to 28-7205328 inclusive, PA-28-235 with serial number 28-10563 to 28-7210033 inclusive, PA-28R-180 with serial numbers 28R-30005 to 28R-7130019 inclusive, and PA-28R-200 with serial numbers 28R-30482, 28R-35001 to 28R-7135238 inclusive.</p> <p>C - Used on PA-28-140 with serial numbers 28-20002 and up, PA-28-150, PA-28-160 and PA-28-180 with serial numbers 28-1 to 28-7205328 inclusive, PA-28R-180 with serial number 528R-30005 to 28R-7130019 inclusive, PA-28R-200 with serial numbers 28R-30482,28R-35001 to 28R-7135238 inclusive, and PA-28-235 with serial numbers 28-10003 to 28-7210023 inclusive.</p> <p>D - Used on PA-28-150, PA-28-160 and PA-28-180 with serial numbers 28-1 to 28-1980 inclusive, PA-28-140 with serial number 28-20002 to 28-20481 inclusive, and PA-28-235 with serial numbers 29-10003 to 28-10562 inclusive.</p>		

When ordering, always specify Part Number, Description, and Serial Number of Aircraft

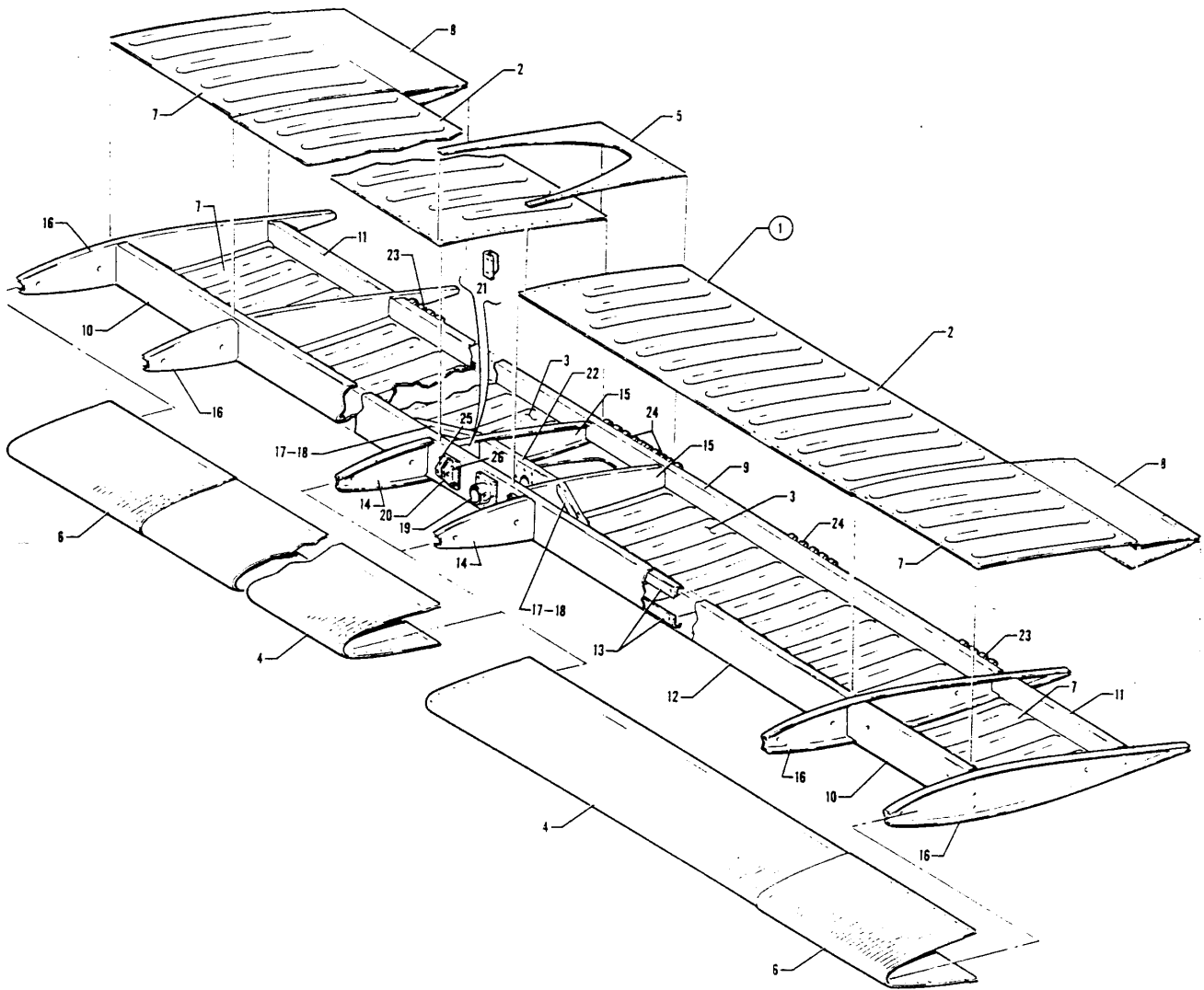


Figure 50D. Stabilator Assembly  
 (PA-28-180 - Serial Nos. 28-7305001 and up)  
 (PA-28-235 - Serial Nos. 28-7310001 and up)  
 (PA-28R-200 - Serial Nos. 28R-7235001 and up)

PA-28-180  
 PA-28-235  
 PA-28R-200

**PIPER PARTS CATALOG**

Figure and Index Number	Part Number	Code	NOMENCLATURE	No. Req.	SERIAL NUMBERS AFFECTED
50D-1	68426-00		STABILATOR ASSEMBLY	1	
-2	63392-00		* SKIN - Stabilator, aft top, left	1	
	63392-01		* SKIN - Stabilator, aft top, right	1	
-3	63393-00		* SKIN - Stabilator, aft bottom, left	1	
	63393-01		* SKIN - Stabilator, aft bottom, right	1	
-4	63573-00		* SKIN - Stabilator, leading edge, left	1	
	63573-01		* SKIN - Stabilator, leading edge, right	1	
-5	63575-00		* SKIN - Stabilator, center, top	1	
	63575-02		* SKIN - Stabilator, center, bottom	1	
-6	68429-00		* SKIN - Stabilator, leading edge, left	1	
	68429-01		* SKIN - Stabilator, leading edge, right	1	
-7	68430-00		* SKIN - Stabilator, top, left	1	
	68430-01		* SKIN - Stabilator, top, right	1	
-8	68431-00		* SKIN - Stabilator, top, left, bottom, right	2	
	68431-01		* SKIN - Stabilator, top, right, bottom, left	2	
-9	63572-00		* SPAR - Stabilator, rear	1	
-10	68427-00		* SPAR - Stabilator, outboard, forward	2	
-11	68428-00		* SPAR - Stabilator, outboard, aft	2	
-12	63561-05		* SPAR - Stabilator, main	1	
-13	63562-00		* CAP - Stabilator, spar	2	
-14	63569-00		* RIB - Stabilator, nose	2	
-15	63570-00		* RIB - Stabilator, aft	2	
-16	63571-00		* RIB - Stabilator, top	4	
-17	63566-03		* STIFFENER - Stabilator, top, left	1	
	63566-02		* STIFFENER - Stabilator, top, right	1	
-18	63566-02		* STIFFENER - Stabilator, bottom, left	1	
	63566-03		* STIFFENER - Stabilator, bottom, right	1	
-19	63567-03	B	* FITTING - Balance weight attachment	2	
-20	63563-00		* FITTING - Stabilator hinge	2	
-21	63564-00		* ANGLE - Stabilator	2	
-22	63565-02		* CLOSURE	1	
-23	63560-02		* HINGE - Extruded, outboard	2	
-24	63560-03		* HINGE - Extruded, inboard and center	4	
-25	400 003	W	* BOLT - (AN4-6A)	4	
	690 611	W	* WASHER - (NAS1149F0463P)	4	
	404 530	W	* NUT - (MS21042-4)	4	
-26	400 004	W	* BOLT - (AN4-7A)	4	
	690 611	W	* WASHER - (NAS1149F0463P)	4	
	404 530	W	* NUT - (MS21042-4)	4	
			A - Used on PA-28-180 with serial numbers 28-7305001 and up. PA-28-235 with serial numbers 28-7310001 and up, and PA-28R-200 with serial numbers 28R-7235001 and up.		
			B - Reference latest revision of Service Bulletin 327 on balance weight tube assembly inspection on PA-28-180 aircraft with serial numbers 28-01 and up and PA-28-235 with serial numbers 28-10000 and up.		
			W - These parts must be ordered from Service Spares Department, Piper Aircraft, Vero Beach, Florida.		

When ordering, always specify Part Number, Description, and Serial Number of Aircraft

# PIPER PARTS CATALOG

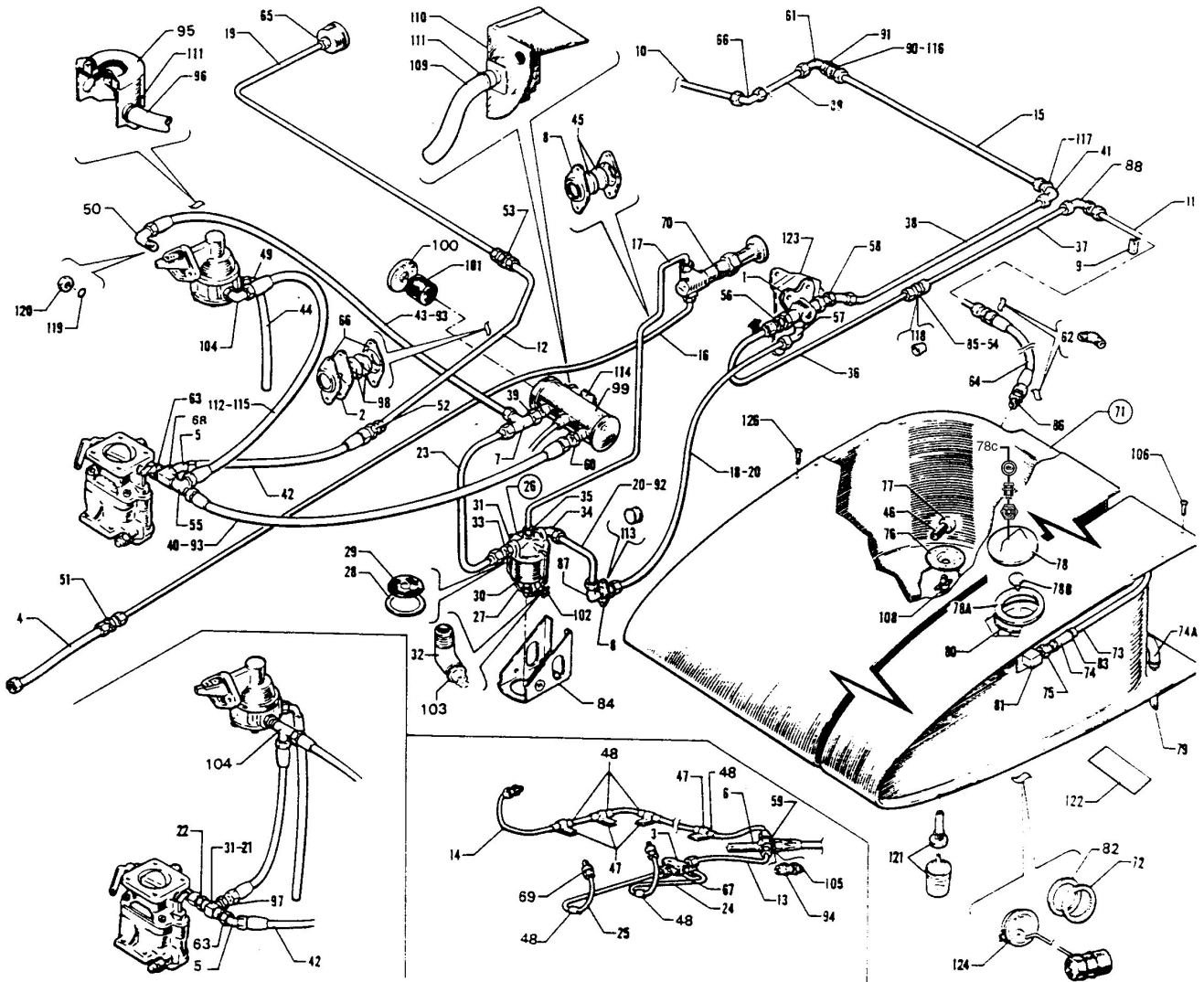


Figure 51. Fuel System Installation

**PIPER PARTS CATALOG**

Figure and Index Number	Part Number	Code	NOMENCLATURE	No. Req.	SERIAL NUMBERS AFFECTED
51-	62218 62222 62313 66690		DRAWING - Fuel Cooling Installation DRAWING - Fuel System Installation DRAWING - Fuel System Installation DRAWING - Fuel System Installation		28-20002 to 28-24999 inclusive 28-20002 to 28-20280 inclusive 28-20281 to 28-24999 inclusive 28-25000 and up
-1	491 947	C	VALVE - Fuel selector (6S122)	1	
-2	68771-06		GASKET- Firewall seal	1	28-25000 and up
-3	14470-00	W	CLAMP	1	
-4	17766-06 63901-77	W	HOSE ASSEMBLY - Flexible (primer line) 1/8" I.D. HOSE ASSEMBLY - Flexible (primer line) 3/16" I.D.	1 1	
-5	66768-00		ELBOW-45 degrees (restricted)	1	
-6	18078-00 65429-02	A,W B	CLAMP - Primer tee CLAMP - Primer tee	1 1	
-7	488 490		TEE - (AN826-6) Electric pump inlet	1	
-8	18321-00	W	RETAINER - Firewall disc	3	
-9	62119-00 62119-01		CLIP - Rib, left CLIP - Rib, right	1 1	
-10	63801-00 65152-09		LINE ASSEMBLY - Fuel, right wing LINE ASSEMBLY - Fuel, right wing	1 1	28-20002 to 28-20280 inclusive 28-20281 and up
-11	63802-00 65152-09		LINE ASSEMBLY - Fuel, Left wing LINE ASSEMBLY - Fuel, left wing	1 1	28-20002 to 28-20280 inclusive 28-20281 and up
-12	63803-04		LINE ASSEMBLY - Fuel pressure (20.12 L)	1	28-20002 to 28-24999 inclusive
-13	63806-00		LINE ASSEMBLY - Primer, left	1	
-14	63807-00		LINE ASSEMBLY - Primer, right	1	
-15	63795-00 62309-00 67700-39		LINE ASSEMBLY - Fuel, right LINE ASSEMBLY - Fuel, right LINE ASSEMBLY - Fuel, right	1 1 1	28-20002 to 28-20280 inc 28-20281 to 28-24999 inc 28-25000 and up
-16	63824-00 63824-10		LINE ASSEMBLY - Primer to engine LINE ASSEMBLY - Primer to engine	1 1	28-20002 to 28-24999 inclusive 28-25000 and up
-17	63825-00 63825-08		LINE ASSEMBLY - Primer, inlet LINE ASSEMBLY - Primer, inlet	1 1	28-20002 to 28-24999 inclusive 28-25000 and up
-18	63798-00		LINE ASSEMBLY - Fuel, valve to firewall	1	
-19	63827-00 63498-00 67700-43		LINE ASSEMBLY - Fuel pressure to gauge LINE ASSEMBLY - Fuel pressure to gauge (43.50 L) LINE ASSEMBLY - Fuel pressure to gauge (52.71 L)	1 1 1	28-20002 to 28-20280 inclusive 28-20281 to 28-24999 inclusive 28-25000 and up
-20	63794-10		LINE ASSEMBLY - Fuel pressure to gascolator	1	
-21	588 391		TEE - (C3709X4)	1	28-22613 and up
-22	476 705		NIPPLE - (C3069X4)	1	28-22613 and up
-23	62214-00 66681-00		TUBE ASSEMBLY - Fuel gascolator to electric pump TUBE ASSEMBLY - Fuel gascolator to electric pump	1 1	28-20002 to 28-24999 inclusive 28-25000 and up
-24	63837-00		LINE ASSEMBLY - Engine primer, left	1	
-25	63838-00		LINE ASSEMBLY - Engine primer, left	1	
-26	63839-03		GASCOLATOR ASSEMBLY - fuel	1	
-27	494 644	W	WIRE ASSEMBLY - Bail, 1 PAS	1	
-28	462 049	W	GASKET - 44 PA	1	
-29	35789-02		SCREEN - Wire fuel strainer	1	
-30	63840-02		BOWL ASSEMBLY - (E. Z. Drain)	1	
-31	87477-02		COVER - Fuel strainer	1	Also used on PA-38, PA-18

A - Used with 118" I.D. hose.  
 B - Used with 3/16" I.D. hose.  
 C - Reference latest revision of Service Bulletin 840 on Fuel Selector Valve Cover Replacement using Kit No. 760-546V. Used in PA-28-140 with serial numbers 28-20000 thru 28-26946 inclusive.  
 W - These parts must be ordered from Service Spares Department, Piper Aircraft, Lock Haven, Penna.

When ordering, always specify Part Number, Description, and Serial Number of Aircraft

**PIPER PARTS CATALOG**

Figure and Index Number	Part Number	Code	NOMENCLATURE	No. Req.	SERIAL NUMBERS AFFECTED
51-32	458 946		ELBOW - (AN915-1D) Drain		
-33	476 678	W	NIPPLE - (AN816-6)	1	
-34	458 868		ELBOW - (MS20B22-6)	1	
-35	460 651	W	CONNECTOR - (W/H 200 x 2)	1	
-36	63846-00		LINE ASSEMBLY - Fuel valve to left wing	1	28-20002 to 28-20280 inclusive
	62306-00		LINE ASSEMBLY - Fuel valve to left wing	1	28-20281 and up
-37	63936-00		LINE ASSEMBLY - Fuel, left	1	28-20002 to 28-20280 inclusive
	62308-00		LINE ASSEMBLY - Fuel, left	1	28-20281 and up
-38	63797-00		LINE ASSEMBLY - Fuel valve to right wing (35")	1	28-20002 to 28-20280 inclusive
	62307-00		LINE ASSEMBLY - Fuel valve to right wing (33")	1	28-20281 and up
-39	451 872	W	ADAPTER - (W/H 3200 x 4 x 2) Electric pump inlet	1	
-40	63901-12		HOSE ASSEMBLY - Flexible	1	
-41	458 901	W	ELBOW - (AN833-6D)	1	28-20002 to 28-20280 inclusive
-42	63901-07		HOSE ASSEMBLY - Flexible, to pressure gauge	1	
-43	63901-18		HOSE ASSEMBLY - Flexible, electric pump to engine pump	1	28-20002 to 28-24999 inclusive
	63901-12		HOSE ASSEMBLY - Flexible, electric pump to engine pump	1	28-25000 and up
-44	63913-11		HOSE ASSEMBLY - Flexible, engine fuel pump vent	1	
-45	63915-02		DISC - Firewall seal	2	28-20002 to 28-24999 inclusive
	63915-18		DISC - Firewall seal	2	28-25000 and up
-46	72091-00	W	STRAINER - Fuel tank finger	2	
-47	80032-69	W	CLAMP	4	
-48	90797-02	W	SLEEVE	7	
-49	451 862		ELBOW - (AN840-4)	1	28-20002 to 28-20218 inclusive
	458 948	W	ELBOW - (1K1-2-4)	1	2B-20219 and up
-50	458 868		ELBOW - (MS20822-6) Engine fuel pump	1	28-20002 to 28-21086 inclusive
	458 936	W	ELBOW - (AN833-6) Engine fuel pump	1	2B-21087 to 28-7525306 incl,
	558 830		ELBOW - (RAC2000-6) Engine fuel pump	1	28-7525307 and up
-51	491 048	W	UNION - (AN815-2D)	1	
	484 348	B.W	REDUCER - (AN919-0D)	1	
-52	491 054		UNION - (AN815-3)	1	28-20002 to 28-24999 inclusive
	484 307		REDUCER - (AN919-2)	1	28-25000 and up
-53	491 049	W	UNION - (AN815-3D)	1	28-20002 to 28-20280 inclusive
	484 351	W	UNION - (AN919-2D)	1	28-20281 to 28-24999 inclusive
-54	491 051	W	UNION - (AN815-5D)	1	28-20002 to 28-20280 inclusive
	491 082		UNION- (6H12D)	1	28-20281 and up
-55	488 490		TEE - (AN826-6)	1	28-20002 to 28-22612 inclusive
-56	476 671	W	NIPPLE - (AN816-5-4D)	1	28-20002 to 28-20280 inclusive
	476 662	W	NIPPLE - (AN816-6D)	1	28-20281 and up
-57	458 895	W	ELBOW - 90 degrees (AN822-6D)	1	
-58	458 892	W	ELBOW - 45 degrees (AN823-6D)	1	
-59	488 318	A,W	TEE - (AN824-2D)	1	
	588 436	B	TEE - (MS20825-2D)	1	
-60	476 685		NIPPLE - (AN816-6-2) Electric pump outlet	1	
-61	458 897	W	ELBOW - (MS20822-5-4D)	1	28-20002 to 28-20280 inclusive

A - Used with 1/8" I.D. Hose.  
 B - Used with 3/16" I.D. Hose.  
 W - These parts must be ordered from Spares Department Piper Aircraft, Lock Haven Penna.

When ordering, always specify Part Number, Description, and Serial Number of Aircraft

**PIPER PARTS CATALOG**

Figure and Index Number	Part Number	Code	NOMENCLATURE	No. Req.	SERIAL NUMBERS AFFECTED
51-62	458 911	W	ELBOW - (AS1040D0505)	2	28-20002 to 28-20280 inclusive
	491 052	W	UNION - (AN815-6D)	2	28-20281 and up
-63	453 680	W	BUSHING - Reducer (AN912-1C)	1	
-64	63901-11		HOSE ASSEMBLY - Flexible, fuel line to fuel tank	2	28-20002 to 28-20280 inclusive
	63901-15		HOSE ASSEMBLY - Flexible, fuel line to fuel tank	2	28-20281 and up
-65	484 348	W	BUSHING - Reducer (AN919-0D)	1	28-20002 to 28-20280 inclusive
-66	66789-00		PI ATE - Firewall seal	2	28-25000 and up
-67	460 652	W	TEE - (W/H 702 x 2)	1	
-68	488 496		TEE - (PF3011-4)	1	28-20002 to 28-22612 inclusive
-69	31197-00	W	PRIMER JET	3	
-70	451 103		PRIMER ASSEMBLY - (K-2406-SAE-2)	1	
-71	63998-16		TANK ASSEMBLY - Left wing fuel	1	
	63998-17		TANK ASSEMBLY - Right wing fuel	1	
-72	462 019	W	* GASKET - Fuel gauge (1515832)	1	
-73	62060-00		* VENT TUBE - Left (with bead)	1	
	62060-01		* VENT TUBE - Right (with bead)	1	
	62060-04		* VENT TUBE - Left (without bead)	1	
	62060-05		* VENT TUBE - Right (without bead)	1	
-74	63913-193		* HOSE - Connector	1	
-74a	63913-194		* HOSE - Connector	1	
-75	451 857	W	* ADAPTER - (AN840-4D) with bead	1	
	560 951		* ADAPTER - (1068 x 6 x 2) without bead	1	
-76	62033-00		* PLATE - Drain	1	
-77	63954-00		* OUTLET ASSEMBLY - Fuel tank	1	
-78	66817-00		* CAP ASSEMBLY - Fuel tank (non-locking)	1	
	39830-800	F	* CAP ASSEMBLY FUEL KIT - Fuel tank (with locks)	1	28-7425001 and up
-78a	66815-00	D	** GASKET - Fuel cap	1	
-78b	492 153	D	** VALVE - Fuel cap vent (VA3123)	1	
-78c	39856-02	E	** LOCK ASSEMBLY - Fuel cap	2	28-7425001
-79	36625-02		* VENT ASSEMBLY - Fuel tank, left	1	
	36625-03		* VENT ASSEMBLY - Fuel tank, right	1	
-80	69785-01		* FILLER NECK ASSEMBLY	1	
-81	62059-00		* FITTING - Fuel line	1	
-82	62044-00		* PLATE - Fuel tank	1	
-83	454 833	B	* CLAMP - (SAE TY E-6)	4	
	454 806	C,W	* CLAMP - (SAE TY E-7)	4	
-84	63834-00		BRACKET - Gascolator mounting	1	
-85	491 051	W	UNION - (AN815-5D)	1	28-20002 to 28-20280 inclusive
	491 082		UNION - (6H12D)	1	28-20281 and up
-86	476 671	W	NIPPLE - (AN816-5-4D)	2	28-20002 to 28-20280 inclusive
	476 662	W	NIPPLE - (AN816-6D)	2	28-20281 and up
-87	458 936	W	ELBOW - (AN833-6)	1	28-20002 to 28-20280 inclusive
-88	458 959		ELBOW - (W/H 502 x 5)	2	28-20002 to 28-20280 inclusive
	558 906		ELBOW - (6E12D)	1	28-20281 and up
-89	63849-00		LINE ASSEMBLY - Fuel, right	1	28-20002 to 28-20280 inclusive
-90	455 259		COUPLING - (AN910-2D)	2	28-20002 to 28-20280 inclusive
-91	476 662	W	NIPPLE - (ANB16-6D)	2	28-20002 to 28-20280 inclusive
-92	63913-14		HOSE - Fire shield	1	
-93	63913-40		HOSE - Fire shield	2	
-94	455 173	A,W	COUPLING - (AN910-1D)	1	
-95	62878-00	A	BAFFLE ASSEMBLY - Fuel pump	1	28-20002 to 28-20256 inclusive
	63422-00		BAFFLE ASSEMBLY - fuel pump	1	28-20257 and up
-96	63633-23		HOSE - Fuel pump air blast	1	
-97	476 678	W	NIPPLE - (AN816-6)	1	28-22613 and up
-98	68770-18		GROMMET - Firewall seal	2	28-25000 and up

A- If Fuel Pump AC 6440174 has been installed, order P/N 63422-00.  
 B- Used with 3/8" O.D. Hose.  
 C- Used with 1/2" O.D. Hose.  
 D- Used with Fuel Cap Part No. 66817-00 only.  
 E - Used with Fuel Cap Assembly Kit, P/N 39830-800 only.  
 F. - Kit includes (2) cap assemblies with matching locks.  
 W - These parts must be ordered from Service Spares Department Piper Aircraft, Lock Haven, Penna.

When ordering, always specify Part Number, Description, and Serial Number of Aircraft

**PIPER PARTS CATALOG**

Figure and Index Number	Part Number	Code	NOMENCLATURE	No. Req.	SERIAL NUMBERS AFFECTED
51-99	481 666	W	PUMP - Electric fuel (478 360)		
-100	751 872	W	• GASKET - Cover (479 136)		
-101	751 799	W	• SCREEN - Filter (479 135)		
-102	492 312	W	VALVE - (CCA-36150) drain, non-locking		
-103	477 677	W	NUT - Tru seal fitting (1/8 pipe)		
-104	458 868		ELBOW - (MS20822-6) Engine fuel pump	1	28-20002 to 28-21086 incl.
	458 936	W	ELBOW -(AN833-6) Engine fuel pump	1	28-21087 to 28-22612 incl.
	488 489	W	TEE - (AN804-6) Engine fuel pump	1	28-22613 to 28-7525306 incl.
	588 462		TEE - (RAC3300-6) Engine fuel pump	1	28-7525307 and up
-105	476 647	A,W	NIPPLE - (AN816-3D)	1	
-106	416 305		SCREW - (AN525-832R12)	30	
-107	416 302		SCREW - (AN525-832R9)	40	
-108	492 312	W	DRAIN - Fuel tank (CCA- 36150) non-locking	2	
	491 806		DRAIN - Fuel tank (F391 -187B) (Flush Type)	2	
-109	63633-23	B	HOSE - Electric fuel pump cooling	1	28-20002 to 28-7125471 inclusive
	63633-104	B	HOSE - Electric fuel pump cooling	1	28-7125472 and up
-110	62215-00		COVER ASSEMBLY - Electric fuel pump cooling	1	28-20002 to 28-24999 inclusive
	66676-03		COVER ASSEMBLY - Electric fuel pump cooling	1	28-25000 and up
	66676-03		COVER ASSEMBLY - Electric fuel pump cooling	1	28-25000 and up
-111	454 994		CLAMP - (H-2-1160)	2	
-112	63901-14		HOSE ASSEMBLY- Flexible	1	
-113	63915-08		DISC- Firewall seal	2	
-114	62219-00		SPACER - Fuel pump mounting	AR	
-115	63913-25		HOSE - Fire shield	1	
-116	491 082		UNION - (6H12D)	1	28-20281 and up
-117	477 670		NUT - (6B12D)	4	2B-20281 and up
-118	460 464		FERRULE - (6T12D)	4	28-20281 and up
-119	462 060	W	“O” RING - (MS29512-6)	2	28-21087 to 28-7525278 incl.
-120	477 631	W	NUT - (AN924-6)	2	28-21087 to 28-7525278 incl.
-121	62924-02		SAMPLER - Fuel (used with Pet-Cock Type Drain)	1	
	67728-00		SAMPLER - Fuel (used with Flush Type Drain)	1	
-122	99364-00		PLACARD - Fuel	2	
-123	99754-02		SUPPORT ASSEMBLY - Fuel selector cover	1	
-124	62037-00		SENDER - Fuel tank (450 759)	2	28-20002 to 2B-20550 inclusive
	68101-02		SENDER - Fuel tank	2	28-20551 and up

A - Used with 3/16" I.D. Hose.  
 B- Reference Service Letter 611 for information on Repositioning of Oil Cooler Hose using Kit No. 760 599V for PA-28-140 Cherokee aircraft with serial numbers 28-7125472 through 28-7225172 inclusive.  
 W - These parts must be ordered from Service Department Piper Aircraft, Lock Haven, Penna.

When ordering, always specify Part Number, Description, and Serial Number of Aircraft



**2K24**  
**INTENTIONALLY LEFT BLANK**

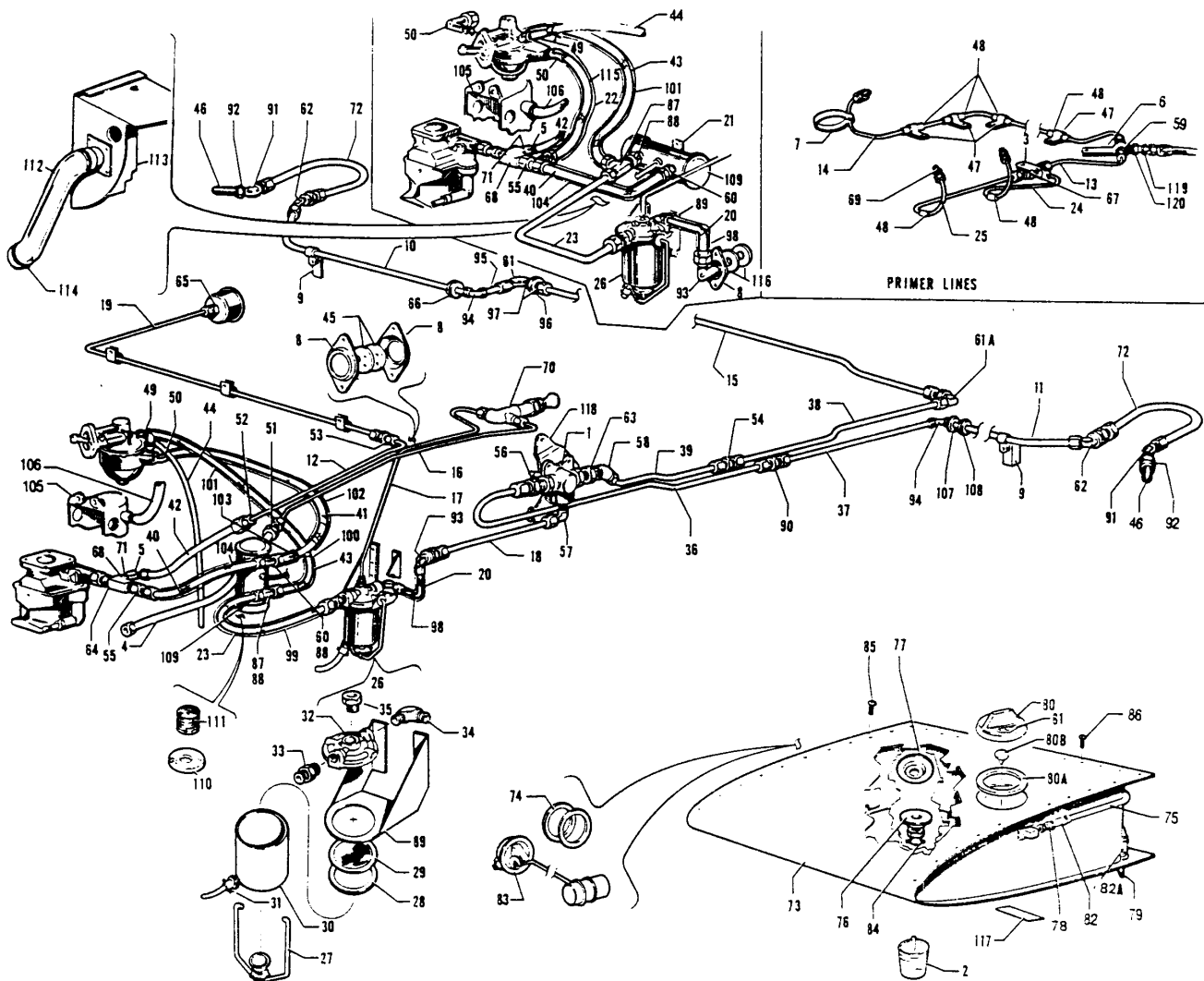


Figure 52. Fuel System Installation  
 (PA-28-150-160-180 - Serial Nos. 28-1 to 28-1760 inclusive)

### PIPER PARTS CATALOG

Figure and Index Number	Part Number	Code	NOMENCLATURE	No. Req.	SERIAL NUMBERS AFFECTED
52-	63800 63796 62222		DRAWING - Fuel System Installation DRAWING - Fuel System Installation DRAWING - Fuel System Installation		28-1 to 28-670 inclusive 28-671 to 28-1520 inclusive 28-1521 to 28-1760 inclusive
-1	491 947	E	VALVE - Fuel selector (6S122)	1	
-2	62924-02 67728-00		SAMPLER - Fuel (used with Pet-Cock Type Drain) SAMPLER - Fuel (used with Flush Type Drain)	1 1	
-3	14470-00	W	CLAMP	1	
-4	17766-06 63901-77	W	HOSE ASSEMBLY - Flexible (primer line) HOSE ASSEMBLY - Flexible (primer line)	1 1	
-5	17803-00	W	ELBOW - 45 Degrees (restricted)	1	
-6	18078-00 65429-02	C,W D	CLAMP - Primer tee CLAMP - Primer tee	1 1	
-7	18307-00	W	CLAMP - Primer tee	1	28-1 to 28-510 inclusive
-8	18321-00	W	RETAINER - Firewall disc	3	
-9	62119-00 62119-01		CLIP - Rib, left CLIP - Rib, right	1 1	
-10	63801-00		LINE ASSEMBLY - Fuel, right wing	1	
-11	63802-00		LINE ASSEMBLY - Fuel, left wing	1	
-12	63803-00 63803-04		LINE ASSEMBLY - Fuel pressure LINE ASSEMBLY - Fuel pressure	1 1	28-1 to 28-510 inclusive 28-511 and up
-13	63806-00		LINE ASSEMBLY - Primer, left	1	
-14	63807-00		LINE ASSEMBLY - Primer, right	1	
-15	63823-00 63795-00		LINE ASSEMBLY - Fuel, right LINE ASSEMBLY - Fuel, right	1 1	28-1 to 28-670 inclusive 28-671 to 28-1760 inclusive
-16	63824-00		LINE ASSEMBLY - Primer, no engine	1	
-17	63825-00		LINE ASSEMBLY - Primer, inlet	1	
-18	63826-00 63798-00		LINE ASSEMBLY - Fuel, valve to firewall LINE ASSEMBLY - Fuel, valve to firewall	1 1	28-1 to 28-670 inclusive 28-671 to 28-1760 inclusive
-19	63827-00		LINE ASSEMBLY - Fuel pressure to gauge	1	
-20	63845-00 63798-00		LINE ASSEMBLY - Fuel, to gascolator LINE ASSEMBLY - Fuel, to gascolator	1 1	28-1 to 28-670 inclusive 28-671 to 28-1760 inclusive
-21	62219-00	B	SPACER - Fuel pump mounting	1	28-1521 to 28-1760 inclusive
-22	63913-25	B	HOSE - Fire shield	1	28-1521 to 28-1760 inclusive
-23	63835-00 63901-10 63901-12	A A A	LINE ASSEMBLY - Fuel, gascolator to electric pump HOSE ASSEMBLY - Fuel, gascolator to electric pump HOSE ASSEMBLY - Fuel, gascolator to electric pump	1 1 1	28-1 to 28-510 inclusive 28-511 to 28-670 inclusive 28-671 to 28-1520 inclusive
-24	62214-00		TUBE ASSEMBLY - Fuel, gascolator to electric pump	1	28-1521 to 28-1760 inclusive
-25	63837-00 63838-00		LINE ASSEMBLY - Engine primer, left LINE ASSEMBLY - Engine primer, left	1	

- A - If Fuel Cooling Kit 756 807, 756 808 or 756 809 has been installed, order part for serial numbers 28-1521 to 28-1760 inclusive.
- B - Used on PA-28-150, PA-28-160 and PA-28-180 with serial numbers 28-1 to 28-1520 inclusive, if Fuel Cooling Kit 756 807, 756 808 or 756 809 has been installed.
- C - Used with 1/8" I. D. Hose.
- D - Used with 3/16" I. D. Hose.
- E - Reference latest revision of Service Bulletin 840 on Fuel Selector Valve Cover Replacement using Kit No. 760-546V. Used in PA-28-150/160/180 aircraft with serial numbers 28-01 thru 28-5859 inclusive.
- W - These parts must be ordered from Service Spares Department, Piper Aircraft, Lock Haven, Penna.

When ordering, always specify Part Number, Description, and Serial Number of Aircraft

### PIPER PARTS CATALOG

Figure and Index Number	Part Number	Code	NOMENCLATURE	No. Req.	SERIAL NUMBERS AFFECTED
52-26	63839-00		GASCOLATOR ASSEMBLY - Fuel	1	28-1 to 28-670 inclusive
	63839-02		GASCOLATOR ASSEMBLY - Fuel	1	28-671 to 28-1760 inclusive
-27	100871-02	W	WIRE ASSEMBLY - Bail 1 PAS	1	
-28	462 049	W	GASKET- 44 PA	1	
-29	35789-02		SCREEN - Wire fuel strainer	1	
-30	63840-00		BOWL ASSEMBLY - (E. Z. Drain)	1	
-31	458 946		ELBOW - (AN915-1D) Drain	1	
	492 312	W	VALVE - (CCA-36150) Drain, non-locking	1	
-32	87477-02	W	COVER - Fuel strainer	1	Also used on PA-38 and PA-18
-33	476 671	A W	NIPPLE - (AN816-5-4)	1	28-1 to 28-670 inclusive
	476 678	W	NIPPLE - (AN816-6)	1	28-6171 to 28-1760 inclusive
-34	458 873	W	ELBOW - (MS20822-54)	1	28-1 to 28-670 inclusive
	458 868		ELBOW - (MS20822-6)	1	28-671 to 28-1760 inclusive
-35	460 651	W	CONNECTOR - (W/H 200 x 2)	1	
-36	63846-00		LINE ASSEMBLY - Fuel valve to left wing	1	
-37	63936-00		LINE ASSEMBLY - Fuel left	1	
-38	63937-00		LINE ASSEMBLY - Fuel valve to right wing rear (18")	1	28-1 to 28-670 inclusive
	63797-00		LINE ASSEMBLY - Fuel valve to right wing (35")	1	28-671 to 28-1760 inclusive
-39	63848-00		LINE ASSEMBLY - Fuel right front (15 1/2")	1	28-1 to 28-670 inclusive
-40	63901-05	A	HOSE ASSEMBLY - Flexible electric pump to carburetor	1	28-1 to 28-670 inclusive
	63901-11	A	HOSE ASSEMBLY - Flexible electric pump to carburetor	1	28-671 to 28-1056 inclusive
	63901-14	A	HOSE ASSEMBLY- Flexible electric pump to carburetor	1	28-1057 to 28-1520 inclusive
	63901-12		HOSE ASSEMBLY- Flexible electric pump to carburetor	1	28-1521 to 28-1760 inclusive
-41	63901-06		HOSE ASSEMBLY - Flexible engine pump to electric pump	1	28-1 to 28-1056 inclusive
	63901-12		HOSE ASSEMBLY - Flexible engine pump to electric pump	1	28-1057 to 28-1520 inclusive
-42	63901-07		HOSE ASSEMBLY - Flexible to pressure gauge	1	
-43	63901-08	A	HOSE ASSEMBLY- Flexible electric pump to engine pump	1	28-1 to 28-670 inclusive
	63901-13	A	HOSE ASSEMBLY- Flexible electric pump to engine pump	1	28-671 to 28-1520 inclusive
	63901-18		HOSE ASSEMBLY- Flexible electric pump to engine pump	1	28-1521 to 28-1760 inclusive
-44	63913-03		HOSE ASSEMBLY- Flexible (engine fuel pump vent)	1	28-1 to 28-342 inclusive
	63913-11		HOSE ASSEMBLY - Flexible (engine fuel pump vent)	1	28-343 to 28-1760 inclusive
-45	63915-02		DISC - Firewall seal	2	
-46	72091-00	W	STRAINER - Fuel tank finger	2	
-47	80032-69	W	CLAMP	4	
-48	90797-02	W	SLEEVE	7	
-49	21227-00	W	ELBOW	1	28-1 to 28-342 inclusive
	458 903	W	ELBOW - (AN842-4)	1	28-343 to 28-670 inclusive
	451 862		ELBOW - (AN840-4)	1	28-671 to 28-1760 inclusive
-50	458 896	A W	ELBOW - (AN822-5D)	2	28-1 to 28 342 inclusive
	458 873	A W	ELBOW - (AN822)	2	28-343 to 28-670 inclusive
	458 873	A W	ELBOW - (AN822-5-4) From fuel strainer	1	28-671 to 28-1056 inclusive
	458 868		ELBOW - (MS2C822-6) From fuel strainer	1	28-1057 to 28-1760 inclusive
	458 873	A W	ELBOW - (M62C822-5-4) To electric fuel pump	1	28-671 to 28-1056 inclusive
	458 868		ELBOW - (MS20822-6) To electric fuel pump	1	28-1057 to 28-1760 inclusive
-51	484 348	B,W	UNION - (AN919-0D )	1	
	484 348	C W	REDUCER - (AN919-0D)	1	

A - If Fuel Cooling Kit 756 807, 756 808 or 756 809 has been installed order, part for serial numbers 28-1521 to 28-1760 inclusive  
 B - Used with 1/8" I.D. hose.  
 C - Used with 3/16" I.D. hose.  
 W - These parts must be ordered from Service Spares Department, Piper Aircraft, Lock Haven, Penna.

When ordering, always specify Part Number, Description, and Serial Number of Aircraft

### PIPER PARTS CATALOG

Figure and Index Number	Part Number	Code	NOMENCLATURE	No. Req.	SERIAL NUMBERS AFFECTED
52-52	491 054		UNION - (AN815-3)	1	
-53	491 049	W	UNION - (AN815-3D)	1	
-54	491 051	W	UNION - (AN815-5D)	1	
-55	476 667	A,W	NIPPLE - (AN815)	1	28-1 to 28-1056 inclusive
	476 678	A,W	NIPPLE - (AN816 6)	1	28-1057 to 28-1520 inclusive
	488 490		TEE - (AN826-6)	1	28-1521 to 28-1760 inclusive
-56	476 671	W	NIPPLE - (AN816)	1	
-57	458 897	W	ELBOW - 90 (AN822-5-4D)	1	28-1 to 28-670 inclusive
	458 895	W	ELBOW - 90 (AN822-6D)	1	28-671 to 28-1760 inclusive
-58	458 890	W	ELBOW - 45 (AN823-5D)	1	28-1 to 28-670 inclusive
	458 892	W	ELBOW - 45 (AN823-6D)	1	28-671 to 28-1760 inclusive
-59	588 436	B,W, C	TEE - (MS20825-2D)	1	
-60	488 336	A	TEE - (AN825-5) Electric pump outlet	1	28-1 to 28-1056 inclusive
	691 223	A,W	TEE - (MS20825-6) Electric pump outlet	1	28-1057 to 28-1520 inclusive
	476 685		NIPPLE - (AN81-6-2) Electric pump outlet	1	28-1521 to 28-1760 inclusive
-61	458 878	W	ELBOW - (AN833-5D)	1	28-1 to 28-670 inclusive
	458 896	W	ELBOW - (MS20822-5D) "150" and "160"	1	28-671 to 28-990 inclusive
	458 897	W	ELBOW - (MS20822-5-4D)	1	28-991 to 28-1760 inclusive
-61a	458 878	W	ELBOW - (AN833-5D)	1	28-1 to 28-670 inclusive
	458 901	W	ELBOW - (AN833-6D)	1	28-671 to 28-1760 inclusive
-62	458 911	W	ELBOW - (AS1040D0505)	2	
-63	453 616	W	BUSHING - Reducer (AN912-1D)	1	28-1 to 28-670 inclusive
-64	453 680	W	BUSHING - Reducer (AN912-1C)	1	28-1 to 28-1056 inclusive
-65	484 348	W	BUSHING - Reducer (AN919-0D)	1	
-66	434 151		GROMMET - (AN931-S-12)	1	
-67	460 652	W	TEE - (W/H 702 x 2)	1	
-68	488 381	A,W	TEE - (W/H 3750 x 2)	1	28-1 to 28-1056 inclusive
	488 496		TEE - (PF3011-4)	1	28-1057 to 28-1760 inclusive
-69	31197-00	W	PRIMER JET	3	
-70	451 103		PRIMER ASSEMBLY - (K-2406-SAE-2)	1	
-71	453 680	W	BUSHING - Reducer (AN912-1C)	1	
-72	63901-11		HOSE ASSEMBLY - Flexible fuel line to fuel tank	2	
-73	63998-16		TANK ASSEMBLY - Left wing fuel	1	
	63998-17		TANK ASSEMBLY - Right wing fuel	1	
-74	462 019	W	* GASKET - Fuel gauge (1515832)	1	
-75	62060-00		* VENT TUBE - Left (with bead)	1	
	62060-01		* VENT TUBE - Right (with bead)	1	
	62060-04		* VENT TUBE - Left (without bead)	1	
	62060-05		* VENT TUBE - Right (without bead)	1	
-76	62033-00	W	* PLATE - Drain	1	
-77	63954-00		* OUTLET ASSEMBLY - Fuel tank	1	
-78	451 857		* ADAPTER - (AN840-4D) with bead	1	
	560 951		* ADAPTER - (1068 x 6 x 2) without bead	1	
-79	36625-02		* VENT ASSEMBLY - Fuel tank left	1	
	36625-03		* VENT ASSEMBLY - Fuel tank right	1	
-80	62045-05		* CAP ASSEMBLY - Fuel tank (used with 1/2", Dia. filler neck)	1	
	66817-00		* CAP ASSEMBLY - Fuel tank (used with 2 1/4", Dia. filler neck)	1	
-80a	66815-00	D	** GASKET - Fuel cap	1	
-80b	492 153	D	** VALVE - Fuel cap vent (VA3123)	1	

A - If Fuel Cooling Kit 756 807, 756 808 or 756 809 has been installed. order part for serial numbers 28-1521 to 28-1760 inclusive  
 B - Used with 1/8" I.D. Hose.  
 C - Used with 3/16" I.D. Hose.  
 D - Used with Fuel Cap P/N 66817-00 only  
 N - These parts must be ordered from Service Spares Department, Piper Aircraft, Lock Haven, Penna.

When ordering, always specify Part Number, Description, and Serial Number of Aircraft

### PIPER PARTS CATALOG

Figure and Index Number	Part Number	Code	NOMENCLATURE	No. Req.	SERIAL NUMBERS AFFECTED
52-81	62142-00		** PLACARD - Fuel tank cap (outboard)	1	
-82	63913-193		* HOSE - Connector	1	
-82a	63913-194		* HOSE - Connector	1	
-83	62037-00		GAUGE - Fuel tank (450 759)	2	
-84	492 312	W	DRAIN - Fuel (CCA-36150) (Pet-Cock Type), non-locking	2	
	491 806		DRAIN - Fuel (F391-187B) (Flush Type)	2	
-85	416 302		SCREW - (AN525-832R9)	40	
-86	416 305		SCREW - (AN525-832R12)	30	
-87	488 336	B	TEE - (AN825-5) Electric pump inlet	1	28-1 to 28-670 inclusive
	691 223	B,W	TEE - (MS20825-6) Electric pump inlet	1	28-671 to 28-1520 inclusive
	488 490		TEE - (AN826-6) Electric pump inlet	1	28-1521 to 28-1760 inclusive
-88	451 872	W	ADAPTER - (W/H 3200 x 4 x 2) Electric pump inlet	1	28-671 to 28-1760 inclusive
	451 872	W	ADAPTER - (W/H 3200 x 4 x 2) Electric pump inlet	1	28-1057 to 28-1520 inclusive
-89	63834-00		BRACKET - Gascolator mounting	1	
-90	491 051	W	UNION - (AN815-5D)	1	28-1 to 28-670 inclusive
-91	458 890	W	ELBOW - 45 degrees (AN823-5D)	2	28-1 to 28-59 inclusive
	476 671	W	NIPPLE - (AN816-5-4D)	2	28-60 to 28-1760 inclusive
-92	453 616	W	BUSHING - Reducer (AN912-1D)	2	28-1 to 28-59 inclusive
-93	458 935	W	ELBOW - (AN833-5)	1	28-1 to 28-670 inclusive
	458 936	W	ELBOW - (AN833-6)	1	28-671 to 28-1760 inclusive
-94	458 959		ELBOW - (W/H 502 x 5)	2	
-95	63849-00		LINE ASSEMBLY - Fuel, right	1	
-96	455 259		COUPLING - (AN910-2D)	1	
-97	476 662	W	NIPPLE - (AN816-6D)	2	
-98	63913- 14		HOSE - Fire shield	1	
-99	63913-15		HOSE - Fire shield	1	28-1 to 28-670 inclusive
	63913-21		HOSE - Fire shield	1	28-671 to 28-1520 inclusive
	63913-16		HOSE - Fire shield	1	28-1 to 28-670 inclusive
-101	63913-17	B	HOSE - Fire shield	1	28-1 to 28-670 inclusive
	63913-24	B	HOSE - Fire shield	1	28-671 to 28-1520 inclusive
	63913-40		HOSE - Fire shield	1	28-1521 to 28-1760 inclusive
-102	63913-18		HOSE - Fire shield	1	28-1 to 28-670 inclusive
	63913-23		HOSE - Fire shield	1	28-671 to 28-1056 inclusive
	63913-21		HOSE - Fire shield	1	28-1057 to 28-1520 inclusive
-103	63913-19		HOSE - Fire shield	1	28-1 to 28-670 inclusive
-104	63913-20	B	HOSE - Fire shield	1	28-1 to 28-1056 inclusive
	63913-25	B	HOSE - Fire shield	1	28-1057 to 28-1520 inclusive
	63913-40		HOSE - Fire shield	1	28-1521 to 28-1760 inclusive
-105	SKVB-244	A,C	BAFFLE ASSEMBLY - Fuel pump	1	28-1 to 28-367 inclusive
	23107-00	A,B,W	BAFFLE ASSEMBLY - Fuel pump	1	28-368 to 28-1520 inclusive
	62878-00	A	BAFFLE ASSEMBLY - Fuel pump	1	28-1521 to 28-1760 inclusive
-106	63633-13		HOSE - Fuel pump air blast	1	28-1 to 28-1520 inclusive
	63633-23		HOSE - Fuel pump air blast	1	28-1521 to 28-1760 inclusive

A - If Fuel Pump AC6440174 has been installed, order Part Number 99311-00.  
 B - If Fuel Cooling Kit 756 807, 756 808 or 756 809 has been installed, order part for serial numbers 28-1521 to 28-1760 inclusive.  
 C - If Fuel Cooling Kit 756 807 has been installed, order Part Number 62402-00.  
 W - These parts must be ordered from Service Spares Department, Piper Aircraft, Lock Haven, Penna.

When ordering, always specify Part Number, Description, and Serial Number of Aircraft

**PIPER PARTS CATALOG**

Figure and Index Number	Part Number	Code	NOMENCLATURE	No. Req.	SERIAL NUMBERS AFFECTED
52-107	434 151		GROMMET - (AN931-5S-12)	1	28-1 to 28-915 inclusive
	434 132	W	GROMMET - (AN931-11-16)	1	28-916 to 28-1760 inclusive
-108	434 151		GROMMET - (AN931-5S-12)	1	28-1 to 28-729 inclusive
	434 132	W	GROMMET - (AN931 - 11 - 16)	1	28-730 to 28-1760 inclusive
-109	481 666	W	PUMP - Electric fuel (478 360)	1	
-110	751 858	E,W	* GASKET - Cover (475 594)	1	
	751 872	F,W	* GASKET - Cover (479 136)	1	
-111	756 107	E,W	* SCREEN - Filter (475 634)	1	
	751 799	F,W	* SCREEN - Filter (479 135)	1	
-112	63633-23	A	HOSE - Electric fuel pump cooling	1	28-1521 to 28-1760 inclusive
-113	62215-00	A	COVER ASSEMBLY - Electric fuel pump cooling	1	28-1521 to 28-1760 inclusive
-114	454 994	A	CLAMP - (#H-2-1160)	2	28-1521 to 28-1760 inclusive
-115	63901-14	A	HOSE ASSEMBLY-Flexible, engine pump outlet	1	28-1521 to 28-1760 inclusive
-116	63915-08	A	DISC - Firewall seal	2	28-1521 to 28-1760 inclusive
-117	99364-00	B	PLACARD - Fuel	2	
	99365-00	C	PLACARD - Fuel	2	
-118	99754-02		SUPPORT ASSEMBLY - Fuel selector cover	1	
-119	476 647	D,W	NIPPLE - (AN816-3D)	1	
-120	455 173	D,W	COUPLING - (AN910- 1D)	1	
<p>A - Used on PA-28-1 50, PA-28-160 and PA-28-180 with serial numbers 28-1 to 28-1520 inclusive if Fuel Cooling Kit 756 807, 756 808 or 756 809 has been installed.</p> <p>B - Used on PA-28-150 airplanes only.</p> <p>C - Used on PA-28-160 and PA-28-180 airplanes only.</p> <p>D - Used with 3/16" I.D. Hose.</p> <p>E - Used with fuel pumps stamped R-1 thru R-7 only.</p> <p>F - Used with fuel pumps stamped R-8 and up only.</p> <p>W - These parts must be ordered from Service Spares Department Piper Aircraft, Lock Haven, Penna</p>					

When ordering, always specify Part Number, Description, and Serial Number of Aircraft

# PIPER PARTS CATALOG

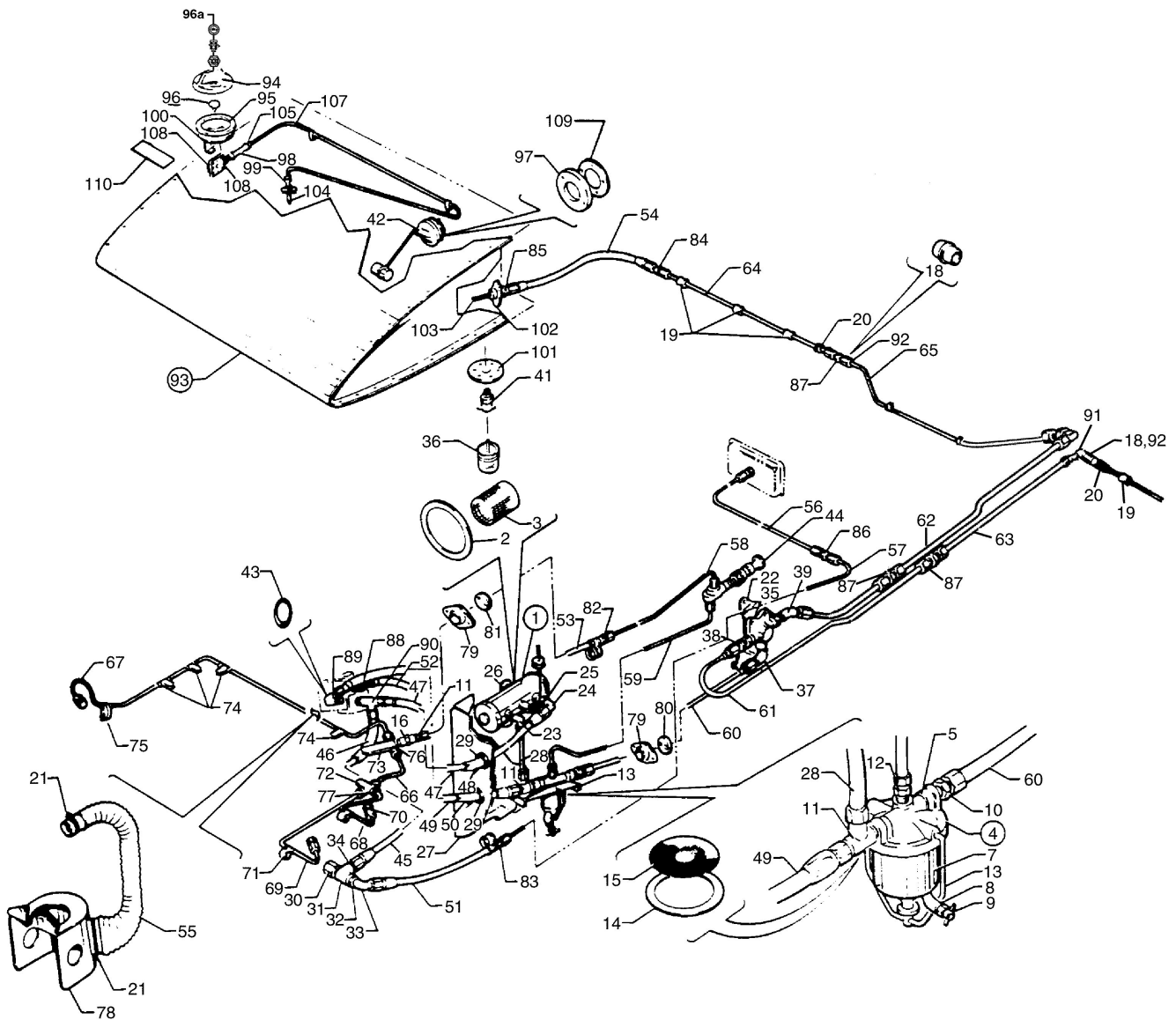


Figure 53. Fuel System Installation  
(PA-28-150-160-180 - Serial Nos. 28-1761 and up)



**PIPER PARTS CATALOG**

Figure and Index Number	Part Number	Code	NOMENCLATURE	No. Req.	SERIAL NUMBERS AFFECTED
53-	62300 65849	B	DRAWING - Fuel System Installation DRAWING - Fuel System Installation		28-1761 to 28-4377 inclusive 28-4378 and up
-1	481 666		PUMP - Electric fuel (478360)	1	
-2	751 872		* GASKET - Cover (479 136)	1	
-3	751 799		* SCREEN - Filter (479 135)	1	
-4	62301-03		GASCOLATOR ASSEMBLY - Fuel	1	
-5	14428-00		* COVER - Fuel strainer	1	
-6	62303-00		* BRACKET- Support	1	
-7	63479 00		* BOWL ASSEMBLY - E.Z. Drain	1	
-8	458 946		** ELBOW - (AN915-ID)	1	
-9	492 312		** VALVE - (CCA-36150) non-locking	1	
-10	476 678		* NIPPLE - (AN816-6)	1	
-11	488 490		* TEE - (AN826-6)	1	
-12	460 651		* CONNECTOR - (W/H 200 x 2)	1	
-13	494 644		* WIRE ASSEMBLY - Bail (1 PAS)	1	
-14	462 049		* GASKET - (44PA)	1	
-15	35789-02		* SCREEN - Wire fuel strainer	1	
-16	455 173	C	COUPLING - (AN910-1D)	1	
-17	476 647	C	NIPPLE - (AN816-3D)	1	
-18	460 464		FERRULE - (6T12D)	4	
-19	463 395		GROMMET- (57NB-7)	6	
-20	434 159		GROMMET - (AN931-7S - 11)	2	
-21	454 994		CLAMP - (H-2-1160)	2	
-22	99754-02		SUPPORT ASSEMBLY - Fuel selector cover	1	
-23	558 910		ELBOW - (MS20822-6-2)	1	
-24	458 868		ELBOW - (AN822-6)	1	
-25	451 872		ADAPTER - (W/H 3200 x 4 x 2)	1	
-26	62219-00		SPACER - Fuel pump mounting	1	
-27	62302-03		COVER ASSEMBLY - Fuel pump and gascolator	1	
-28	65152-11		TUBE ASSEMBLY - Fuel	1	
-29	434 142		GROMMET- (AN931-14-20)	1	
-30	476 705	A	NIPPLE - (C3069X4)	1	
-31	588 391	A	TEE - (C3709X4)	1	
	488 496	B	TEE - (PF3011-4)	1	
-32	453 680		REDUCER - (AN912-1C)	1	
-33	66768-00		ELBOW - Restricted (45°)	1	
-34	476 678		NIPPLE - (AN816-6)	1	
-35	491 947		VALVE - Fuel selector (6S122)	1	
-36	62924-02		SAMPLER - Fuel (used with Pet-Cock Type Drain)	1	
	67728-00		SAMPLER - Fuel (used with Flush Type Drain)	1	
-37	458 895		ELBOW - (AN822-6D)	1	
-38	476 662		NIPPLE - (AN816-6D)	1	
-39	458 892		ELBOW - (AN823-6D)	1	
-40	491 082		UNION - (6H12D)	1	
-41	492 312		DRAIN - Fuel tank (CCA-36150) (Pet-Cock Type) non-locking	1	
	491 806		DRAIN - Fuel tank (F391-187B) (Flush Type)	2	
-42	68101-02		SENDER - Fuel tank	2	

A- Used on PA-28- 150 and PA-28-160 airplanes only.  
 B - Used on PA-28-180 airplanes only.  
 C- Used with 3/16" I-D. Hose.

When ordering, always specify Part Number, Description, and Serial Number of Aircraft

### PIPER PARTS CATALOG

Figure and Index Number	Part Number	Code	NOMENCLATURE	No. Req.	SERIAL NUMBERS AFFECTED
53-43	462 060	A	"O" RING - (MS29512-6)		
-44	451 103		PRIMER ASSEMBLY - (K-2406-SAE-2)	1	
-45	63901-14		HOSE ASSEMBLY - Engine pump outlet	1	
-46	63913-25		HOSE - Fire shield	1	
-47	63901-12		HOSE ASSEMBLY - Engine pump outlet	1	
48	63913-40		HOSE - Fire shield	1	
-49	63901-19		HOSE ASSEMBLY - Engine pump inlet	1	
-50	63913-41		HOSE - Fire shield	1	
-51	63901-07		HOSE ASSEMBLY - To fuel pressure gauge	1	
-52	63913-11		HOSE - Flexible engine pump drain	1	
-53	17766-06	D	HOSE ASSEMBLY - To primer lines (1/8" I.D.)	1	
	63901-77	E	HOSE ASSEMBLY - To primer lines (3/16" I.D.)	1	
-54	63901-15		HOSE ASSEMBLY - Fuel line to fuel tank	2	
-55	63633-23		HOSE - Engine pump air	1	
-56	62928-00		LINE ASSEMBLY - Fuel pressure (1/4" x 46")	1	28-1761 to 28-4377 inclusive
	67700-36	B	LINE ASSEMBLY - Fuel pressure (1/4" x 52")	1	28-4378 to 28-5831 inclusive
	67700-55	B	LINE ASSEMBLY - Fuel pressure (1/4" x 57")	1	28-5832 and up
-57	63803-04		LINE ASSEMBLY - Fuel pressure (3/16" x 20")	1	28-1761 to 28-4377 inclusive
-58	63824-00		LINE ASSEMBLY - Primer to engine	1	28-1761 to 28-4377 inclusive
	63824-06	B	LINE ASSEMBLY - Primer to engine	1	28-4378 and up
-59	63825-00		LINE ASSEMBLY - Primer to gascolator	1	28-1761 to 28-4377 inclusive
	63825-06	B	LINE ASSEMBLY - Primer to gascolator	1	28-4378 and up
-60	62305-00		LINE ASSEMBLY - Selector valve to gascolator	1	
-61	62306-00	C	LINE ASSEMBLY - Selector valve to left wing	1	
	67700-57	B	LINE ASSEMBLY - Selector valve to left wing	1	28-7305001 and up
-62	62307-00	C	LINE ASSEMBLY - Selector valve to right wing	1	
	62307-03	B	LINE ASSEMBLY - Selector valve to right wing	1	28-7305001 and up
-63	62308-00		LINE ASSEMBLY - To left wing	1	
-64	65152-09		LINE ASSEMBLY - Fuel, wing	2	
-65	62309-00		LINE ASSEMBLY - Fuel, right wing	1	28-1761 to 28-4377 inclusive
	67700-39	B	LINE ASSEMBLY - Fuel, right wing	1	28-4378 and up
-66	63806-00		LINE ASSEMBLY - Primer, left	1	
-67	63807-00		LINE ASSEMBLY - Primer, right	1	
-68	63837-00		LINE ASSEMBLY - Primer, left	1	
-69	63838-00		LINE ASSEMBLY - Primer, left	1	
-70	31197-00		PRIMER JET	3	
-71	90797-02		SLEEVE - Primer line clamp	7	
-72	14470-00		BRACKET - Primer line tee	1	
-73	18078-00	D	CLAMP - Primer line tee	1	
	65429-02	E	CLAMP - Primer line tee	1	
-74	80032-69		CLAMP - Primer line	4	
-75	21230-00		CLAMP - Primer line	1	
-76	488 318	D	TEE - (AN824-2D)	1	
	588 436	E	TEE - (MS20825-2D)	1	
-77	460 652		TEE - (W/H 702 x 2)	1	

- A - Used when Engine Fuel Pump Lycoming 75246 is installed.
- B- Used on PA-28-180 airplanes only.
- C- Used on PA-28-180 with serial numbers 28-1761 to 28-7205328 inclusive, PA-28-150 and PA-28-160 airplanes only.
- D- Used with 1/8" I.D. Hose.
- E- Used with 3/16" I.D. Hose.

When ordering, always specify Part Number, Description, and Serial Number of Aircraft

### PIPER PARTS CATALOG

Figure and Index Number	Part Number	Code	NOMENCLATURE	No. Req.	SERIAL NUMBERS AFFECTED
53-78	62878-00	D,E	BAFFLE ASSEMBLY - Engine fuel pump	1	
	99311-00	F	BAFFLE ASSEMBLY - Engine fuel pump	1	
-79	18321-00		PLATE - Firewall seal	4	
-80	63915-13		GROMMET- Firewall seal	2	28-1761 to 28-4377 inclusive
	63915-14	C	GROMMET - Firewall seal	2	28-4378 and up
-81	63915-11		GROMMET- Firewall seal	2	
-82	491 048	G	UNION - (AN815-2D)	1	
	484 348	H	REDUCER - (AN919-0D)	1	
-83	491 054		UNION - (AN815-3)	1	28-1761 to 28-4377 inclusive
	484 307	C	UNION - (AN919-2)	1	28-4378 and up
-84	491 052		UNION - (AN815-6D)	2	
-85	476 662		UNION - (AN816-6D)	2	
-86	484 351		UNION - (AN919-2D)	1	28-1761 to 28-4377 inclusive
-87	491 082		UNION - (6H12D)	2	
-88	458 948		ELBOW- 90° (K1-2-4)	1	
-89	458 868	A	ELBOW - (MS20822-6)	1	
	558 830	B	ELBOW- (RAC2000-6)	1	
-90	488 490	A	TEE - (AN826-6)	1	
	588 462	B	TEE - (RAC3300-6)	1	
-91	558 906		ELBOW- (6E12D)	1	
-92	477 670		NUT - (6B12D)	4	
-93	63998-16		TANK ASSEMBLY- Fuel, left wing	1	
	63998-17		TANK ASSEMBLY - Fuel, right wing	1	
-94	66817-00		CAP ASSEMBLY - Fuel tank	1	
-95	66815-00	E	** GASKET - Fuel cap	1	
-96a	39856-02	K	LOCK ASSEMBLY - Fuel cap		
-96	492 153	J	** VALVE - Fuel cap vent (VA3123)	1	
-97	462 019		* GASKET- Fuel gauge (1515832)	1	
-98	63913-193		* HOSE - Connector	1	
-99	63913-194		* HOSE - Connector	1	
	69785-01		* FILLER NECK ASSEMBLY	1	
-101	62033-00		* PLATE - Drain	1	
-102	63954-00		* OUTLET ASSEMBLY - Fuel tank	1	
-103	72091-00		* STRAINER - Fuel tank finger	1	
			A- Used when Engine Fuel Pump Lycoming 75148 is installed.		
			B- Used when Engine Fuel Pump Lycoming 75246 is installed.		
			C- Used on PA-28-180 airplanes only.		
			D- Used on PA-28-160 with serial numbers 28-1761 to 28-1867 inclusive, and PA-28-180 with serial numbers 28-1761 to 28-1793, 28-1795, 1796, 1800, 1803, 1805 and 1806.		
			E- If Fuel Pump AC6440174 has been installed, order P/N 63422-00.		
			F- Used on PA-28-150 with serial numbers 28-1761 and up, PA-28-160 with serial numbers 28-1868 and up, and PA-28-180 with serial numbers 28-1794, 1797, 1798, 1799,1801, 1802, 1804,1807 and up, and PA-28-140.		
			G- Used with 1/8" I.D. Hose.		
			H- Used with 3/16" I.D. Hose.		

When ordering, always specify Part Number, Description, and Serial Number of Aircraft

**PIPER PARTS CATALOG**

Figure and Index Number	Part Number	Code	NOMENCLATURE	No. Req.	SERIAL NUMBERS AFFECTED
53-104	36625-02		* VENT ASSEMBLY - Fuel tank left	1	
	36625-03		* VENT ASSEMBLY - Fuel tank right	1	
-105	554 861		* CLAMP - (SAE TY F-4)	4	
-106	451 857		* ADAPTER - (AN840-4D) with bead	1	
	560 951		ADAPTER - (1068 X 6 X 2) without bead	1	
-107	62060-00		* VENT TUBE - Left (with bead)	1	
	62060-01		* VENT TUBE - Right (with bead)	1	
	62060-04		* VENT TUBE - Left (without bead)	1	
	62060-05		* VENT TUBE - Right (without bead)	1	
-108	62059-00		FITTING - Fuel line	1	
-109	62044 00		* PLATE - Fuel tank	1	
-110	99364-00	A	PLACARD - Fuel	2	
	99365-00	B	PLACARD - Fuel	2	
	69669-63	C	PLACARD - Fuel	2	
			A- Used on PA-28-150 airplanes only.		
			B- Used on PA-28-160 and PA-28-180 with serial numbers 28-1761 to 28-7205328 inclusive.		
			C- Used on PA-28-180 with serial numbers 28-7305001 and up.		

When ordering, always specify Part Number, Description, and Serial Number of Aircraft

# PIPER PARTS CATALOG

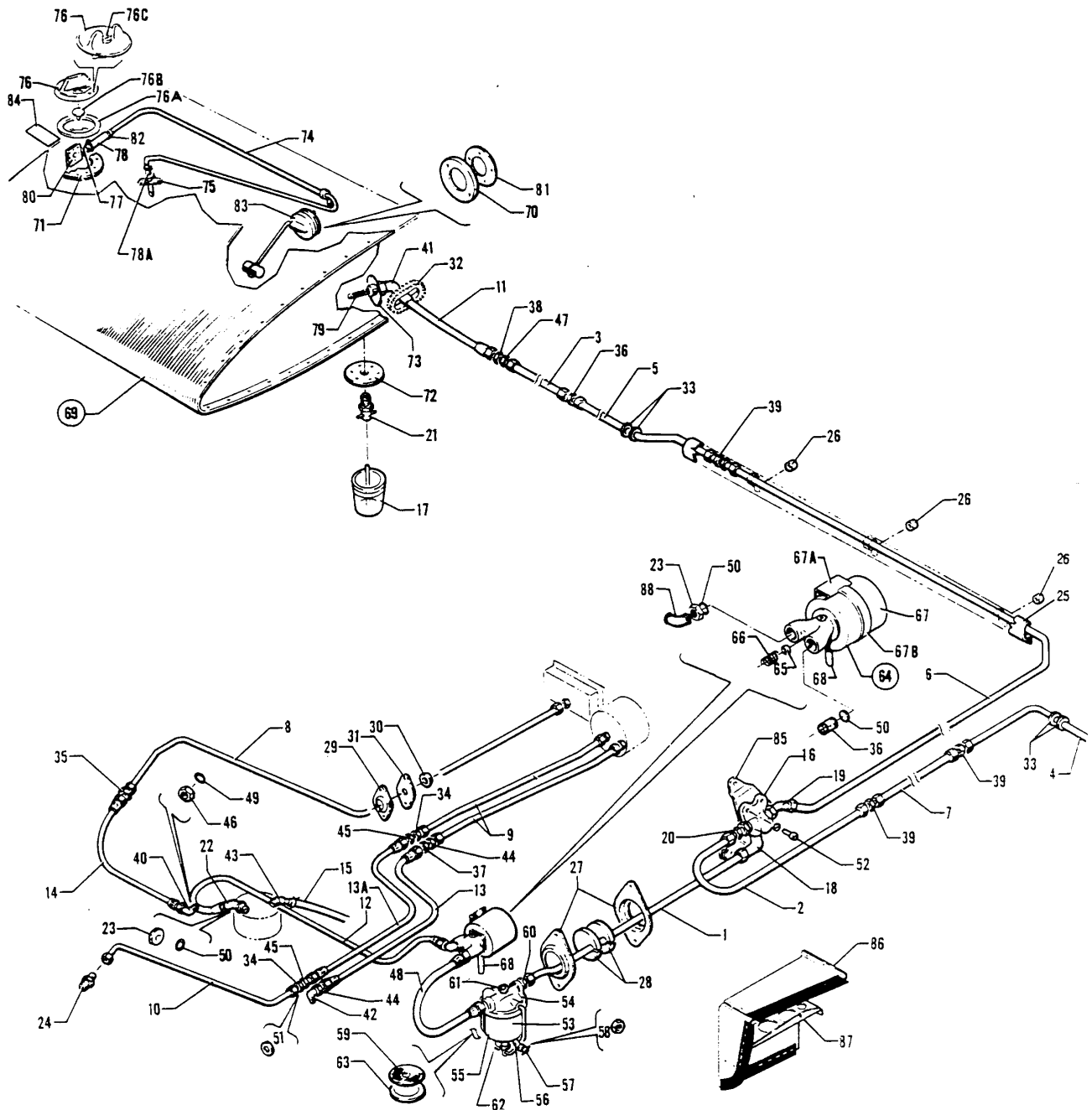


Figure 54. Fuel System Installation

**PIPER PARTS CATALOG**

Figure and Index Number	Part Number	Code	NOMENCLATURE	No. Req.	SERIAL NUMBERS AFFECTED
54-	67621 67802	A B	DRAWING - Fuel System Installation DRAWING - Fuel System Installation		
-1	62305-00		TUBE ASSEMBLY - Fuel line	1	
-2	62306-00	C	TUBE ASSEMBLY - Fuel line	1	
	67700-57	B	TUBE ASSEMBLY - Fuel line	1	28R-7235001 and up
-3	67700-02		TUBE ASSEMBLY - Fuel line	2	
-4	67700-03		TUBE ASSEMBLY - Fuel line	1	
-5	67700-05		TUBE ASSEMBLY - Fuel line	1	
-6	67700-04	C	TUBE ASSEMBLY - Fuel line	1	
	67700-56	B	TUBE ASSEMBLY - Fuel line	1	28R-7235001 and up
-7	67700-25		TUBE ASSEMBLY - Fuel line	1	
-8	67700-26		TUBE ASSEMBLY - Fuel line	1	
-9	67700-28		TUBE ASSEMBLY - Fuel line	2	
-10	67700-37		TUBE ASSEMBLY - Fuel line	1	28R-30005 to 28R-30399 incl..
-11	63901-46		HOSE ASSEMBLY - Fuel line	2	
-12	63901-38		HOSE ASSEMBLY - Fuel line	1	
-13	63901-39		HOSE ASSEMBLY - Fuel line	1	
-13a	63901-40		HOSE ASSEMBLY - Fuel line (241/2" long)	1	28R-30005 to 28R-30399 incl.
	63901-45		HOSE ASSEMBLY - Fuel Line (38" long)	1	28R-30400 and up
-14	63901-41		HOSE ASSEMBLY - Fuel Line		
-15	63913-03		HOSE- Fuel Line	1	
-16	491 947		VALVE -Fuel selector (6S122)	1	
-17	62924-02		SAMPLER - Fuel (used with Pet Cock Type Drain)	1	
	67728-00		SAMPLER - Fuel (used with Flush Type Drain)	1	
-18	458 895		ELBOW - (AN822-6D)	1	
-19	458 892		ELBOW - (AN823-6D)	1	
-20	476 662		NIPPLE - (AN816-6D)	1	
-21	492 312		DRAIN - Fuel tank (CCA-36150) (Pet-Cock Type) non-locking	2	
	491 806		DRAIN - Fuel tank (F391-187B) (Flush Type)	2	
-22	458 864		ELBOW - (AS1040-060)	1	
-23	477 631		NUT - (AN924-6)	2	
-24	67476-00		NIPPLE - Restricted	1	28R-30400 and up
-25	67661-00		GUARD - Fuel line	1	
-26	67656-02		SPACER - Tabulated	3	
-27	18321-00		RETAINER - Firewall disc	2	
-28	63915-14		DISC- Firewall seal	2	
-29	66789-00		PLATE - Firewall seal grommet	2	
-30	68770-18		GROMMET - Firewall seal grommet	2	
-31	22105-10		GASKET - Firewall seal	1	
-32	63976-24		GROMMET - Caterpillar	2	
-33	434 133		GROMMET- (AN931-6-16)	4	

A- Used on PA-28R-180 airplanes only.  
 B- Used on PA-28R-200 airplanes only.  
 C- Used on PA-28R-180 with serial numbers 28R-30005 to 2BR-7130019 inclusive and PA-28R-200 with serial numbers 28R-30482, 28R-35001 to 28R-7135238 inclusive.

When ordering, always specify Part Number, Description, and Serial Number of Aircraft

**PIPER PARTS CATALOG**

Figure and Index Number	Part Number	Code	NOMENCLATURE	No. Req.	SERIAL NUMBERS AFFECTED
54-34	2339-00		UNION - Flared tube (Special)	2	
-35	491 055		UNION - (AN815-4)	1	
-36	491 056		UNION - (AN815-6)	3	
-37	491 064		UNION - (AN832-2)	1	
-38	491 062		UNION - (AN832-6D)	2	
-39	491 082		UNION - (6H12D)	3	
-40	69033-00		ELBOW - 90 degrees (restricted)	1	
-41	458 895		ELBOW - 90 degrees (AN822-6D)	2	
-42	458 876		ELBOW - 90 degrees (AN833-2D)	1	
-43	458 940		ELBOW - 45 degrees (N844-4D)	1	
-44	477 627		NUT - (AS5178-02)	2	
-45	477 628		NUT- (AN924-3)	2	
-46	477 629		NUT- (AN924-4)	1	
-47	477 620		NUT - (AN924-6D)	2	
-48	63901-14		HOSE ASSEMBLY - Fuel line	1	
-49	462 058		O - RING - (MS2512-4)	1	
-50	484 843		O - RING - (MS9512-6)	3	
-51	690 629		WASHER - Lock (NAS1149F0663P)	2	
-52	416 210		SCREW - (AN502-10-12)	2	
	407 124		WASHER - Lock (AN935-10L)	2	
-53	67604-02		GASCOLATOR ASSEMBLY - Fuel	1	
-54	87477-02		COVER - Fuel strainer	1	
-55	63479 00		BOWL ASSEMBLY - Gascolator	1	
-56	458 946		ELBOW - (AN915-1D)	1	
-57	492 312		VALVE - (CCA-36150) Drain, non-locking	1	
-58	477 677		NUT-Tru seal fitting (1/8" pipe)	1	
-59	35789-02		SCREEN - Wire fuel strainer	1	
-60	476 678		NIPPLE - (AN816-6)	2	
-61	580 887		PLUG - (AN932-2)	1	
-62	494 644		WIRE ASSEMBLY - Bail (1 PAS)	1	
-63	462 049		GASKET- (44 PA)	1	
-64	67881-05		PUMP ASSEMBLY - Electric, fuel	1	
-65	756 155		SEAL - Shaft (8500)	1	
-66	757 561		SPRING - Valve (8707)	1	
-67	67881-04		MOTOR ASSEMBLY - Fuel pump	1	
-67a	67882-02		BRACKET ASSEMBLY - Fuel pump mounting	2	
-67b	554 984		CLAMP - (SAE TY F-36)	1	
-68	69015-05		HOSE - Fuel pump drain	1	
-69	63998-16		TANK ASSEMBLY - Left wing fuel	1	
	63998-17		TANK ASSEMBLY - Right wing fuel	1	
-70	462 019		GASKET - Fuel gauge (1515832)	1	
-71	69785-01		FILLER NECK ASSEMBLY	1	
-72	62033-00		PLATE - Drain	1	
-73	63954-00		OUTLET ASSEMBLY - Fuel tank	1	
-74	62060-00		VENT TUBE - Left (with bead)	1	
	62060-01		VENT TUBE - Right (with bead)	1	
	62060-04		VENT TUBE - Left (without bead)	1	
	62060-05		VENT TUBE - Right (without bead)	1	
-75	36625-02		VENT ASSEMBLY - Fuel tank left	1	
	36625-03		VENT ASSEMBLY - Fuel tank right	1	

When ordering, always specify Part Number, Description, and Serial Number of Aircraft

**PIPER PARTS CATALOG**

Figure and Index Number	Part Number	Code	NOMENCLATURE	No. Req.	SERIAL NUMBERS AFFECTED
54-76	66817-00		CAP ASSEMBLY - Fuel tank (non-locking)	1	
	39830-800	B,E	CAP ASSEMBLY KIT - Fuel tank (with locks)	1	28-7435001 and up
-76a	66815-00	C	GASKET - Fuel cap	1	
	39829-02	D	GASKET - Fuel cap	1	
-76b	492 153	C	* * VALVE - Fuel cap vent (VA3123)	1	
-76c	39856-02	D	LOCK ASSEMBLY - Fuel cap	2	
-77	451 857		* ADAPTER - (AN840-4D) with bead	1	
	560 951		* ADAPTER - (1068 x 6 x 2) without bead	1	
-78	63913-193		* HOSE - Connector	1	
-78a	63913-194		* HOSE - Connector	1	
-79	72091-00		* STRAINER - Fuel tank finger	1	
-80	62059 00		* FITTING - Fuel Line	1	
-81	62044 00		* PLATE - Fuel tank	1	
-82	554 861		* CLAMP - (SAE TY F-4)	4	
-83	68101-02		SENDER - Fuel tank	2	
-84	99367-00	A	PLACARD - Fuel	2	
	69669-63	B	PLACARD - Fuel	2	28R-7235001 and up
-85	99754-02		SUPPORT ASSEMBLY - Fuel selector cover	1	
-86	67881-06		COVER ASSEMBLY - Fuel pump	1	
-87	67603-00		BRACKET - Gascolator assembly	1	
-88	458 936		ELBOW- (AN833-6)	1	

A- Used on PA-28R-180 with serial numbers 28R-30005 to 28R-7130019 inclusive, and PA-28R-200 with serial numbers 28R-30482, 28R-35001 to 28R-7135238 inclusive.  
 B- Used on PA-28R-200 airplanes only.  
 C- Used with Fuel Cap, Part Number 66817 only.  
 D- Used with fuel Cap Assembly Kit P/N 39830-800 only  
 E- Kit includes 1(2) cap assemblies with matching locks.

When ordering, always specify Part Number, Description, and Serial Number of Aircraft



# PIPER PARTS CATALOG

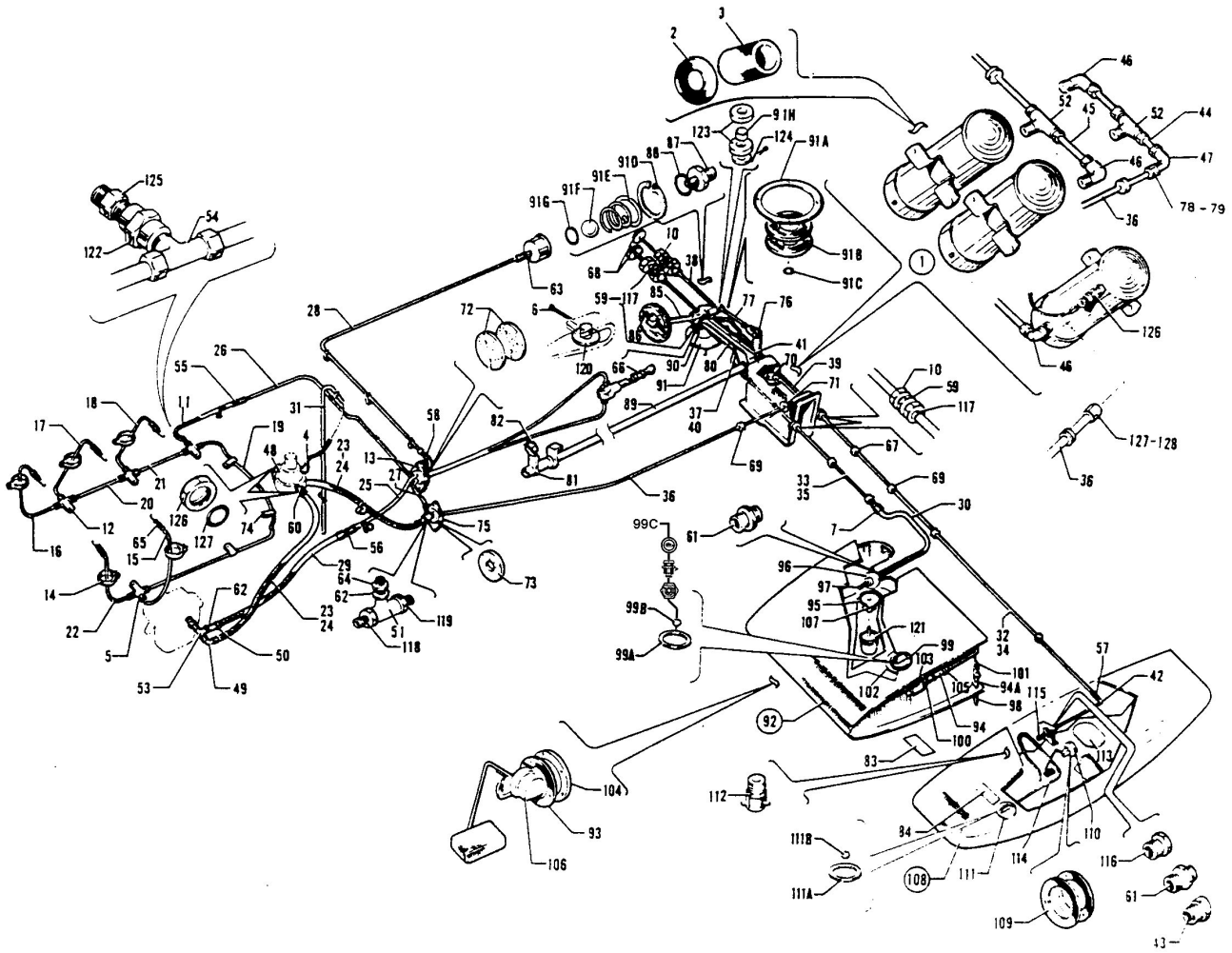


Figure 55 Fuel System Installation

**PIPER PARTS CATALOG**

Figure and Index Number	Part Number	Code	NOMENCLATURE	No. Req.	SERIAL NUMBERS AFFECTED
55-	65160 65562 69172 69254 65405 65560 69100 68084		DRAWING - Fuel System Installation DRAWING - Fuel System Installation DRAWING - Fuel System Installation DRAWING - Fuel System Installation DRAWING - Fuel Selector Valve Installation DRAWING - Fuel Selector Valve Installation DRAWING - Fuel Selector Valve Installation DRAWING - Fuel Selector Valve Installation		28-10003 to 28-10719 inclusive 28-10720 to 28-10851 inclusive 28-10852 to 28-11039 inclusive 28-11040 and up 28-10003 to 28-10719 inclusive 28-10720 to 28-10785 inclusive 28-10786 to 28-11300 inclusive 28-11301 and up
-1	481 701 481 701		PUMP - Electric fuel (480 543) PUMP - Electric fuel (480 543)	2 1	28-10003 to 28-10719 inclusive 28-10720 and up
-2	751 872	W	* GASKET - Cover (479 136)	1	
-3	751 799 458 948	W W	SCREEN - Filter (479 135) ELBOW - (1K1-2-4)	1 1	
-5	488 318	W	TEE - (AN824-2D)	3	
-6	424 058		COTTER PIN - (MS24665-281)	1	
-7	491 052 484 359	W W	UNION - (AN815-6D) REDUCER - (AN919-12D)	2 2	28-10003 to 28-10719 incl. 28-10720 and up
-8	477 631	W	NUT - (AN924-6)	2	28-10720 to 28-7510059 incl.
-9	462 060	W	GASKET - (MS29512-6)	2	28-10720 to 28-7510059 incl.
-10	477 670		NUT - (B12-D)	8	28-10003 to 28-10719 incl.
-11	17766-06 63901-77	W	HOSE ASSEMBLY - Primer line connection (1/8" I.D. ) HOSE ASSEMBLY - Primer line connection (3/16" I.D. )	1 1	
-12	18078-00 65429-00	W	CLAMP CLAMP	4 4	28-10003 to 28-10152 inclusive 28-10153 and up
-13	18321-00	W	PLATE - Firewall disc	2	
-14	21230-00	W	CLAMP	5	
-15	65364-04		LINE ASSEMBLY - Engine primer, left, center	1	
-16	65364 -03		LINE ASSEMBLY - Engine primer, right, front	1	
-17	65364-04		LINE ASSEMBLY - Engine primer, right, center	1	
-18	65364-05		LINE ASSEMBLY - Engine primer, right, rear	1	
-19	65365-02		LINE ASSEMBLY - Engine primer, left	1	
-20	65365-03		LINE ASSEMBLY - Engine primer, right, center	1	
-21	65365-04		LINE ASSEMBLY - Engine primer, right, rear	1	
-22	65366-00		LINE ASSEMBLY - Engine primer, left, front	1	
-23	63901-13 63901-23 63901-24		HOSE ASSEMBLY - Engine fuel pump HOSE ASSEMBLY - Engine pump up electric pump line HOSE ASSEMBLY - Engine pump to carburetor	2 1 1	28-10003 to 28-10719 inclusive 28-10720 and up 28-10720 and up
-24	63913-24		HOSE - Fire shield	2	28-10003 to 28-10719 inclusive
-25	63803-04		LINE ASSEMBLY - Fuel pressure (3/16" x 20")	1	28-10003 to 28-11039 inclusive
-26	63824-03 6382--08		LINE ASSEMBLY - Primer LINE ASSEMBLY - Primer	1 1	28-10003 to 28-11039 inclusive 28-11040 and up
-27	63825-03 63825-06		LINE ASSEMBLY - Primer LINE ASSEMBLY - Primer	1 1	28-10003 to 28-11039 inclusive 28-11040 and up
-28	65281-00 62928-00 67700-36		LINE ASSEMBLY - Fuel pressure (1/4" x 43 3/4") LINE ASSEMBLY - Fuel pressure (1/4" x 46") LINE ASSEMBLY - Fuel pressure (1/4" x 52")	1 1 1	28-10003 to 28-10486 inclusive 28-10487 to 28-11039 inclusive 28-11040 and up

W- These parts must be ordered from Service Spares Department, Piper Aircraft, Lock Haven, Penna.

When ordering, always specify Part Number, Description, and Serial Number of Aircraft

**PIPER PARTS CATALOG**

Figure and Index Number	Part Number	Code	NOMENCLATURE	No. Req.	SERIAL NUMBERS AFFECTED
55-29	63901-07		HOSE ASSEMBLY - Carburetor to pressure gauge		28-10003 to 28-11039 inclusive
55-29	63901-44		HOSE ASSEMBLY - Carburetor to pressure gauge	1	28-11040 and up
-30	63901-15		HOSE ASSEMBLY - Fuel tank to fuel line	2	
-31	63913-26		HOSE - Engine fuel pump vent	1	
-32	65152-02		LINE ASSEMBLY - Valve to tip tank, left	1	28-10003 to 28-10560 inclusive
	65152-12		LINE ASSEMBLY - Valve to tip tank, left	1	28-10561 to 28-10719 inclusive
	65152-14		LINE ASSEMBLY - Valve to tip tank, left	1	28-10720 to 28-10851 inclusive
	69166-00		LINE ASSEMBLY - Valve to tip tank, left	1	28-10852 and up
-33	65152-03		LINE ASSEMBLY - Valve to main tank, left	1	28-10003 to 28-10560 inclusive
	65152-13		LINE ASSEMBLY - Valve to main tank, left	1	28-10561 to 28-10719 inclusive
	65152-17		LINE ASSEMBLY - Valve to main tank, left	1	28-10720 and up
-34	65152-04		LINE ASSEMBLY - Valve to tip tank, right	1	28-10003 to 28-10719 inclusive
	65152-20		LINE ASSEMBLY - Valve to tip tank, right	1	28-10720 to 28-10851 inclusive
	69166-01		LINE ASSEMBLY - Valve to tip tank, right	1	28-10852 and up
-35	65152-05		LINE ASSEMBLY - Valve to main tank, right	1	28-10003 to 28-10232 inclusive
	65152-09		LINE ASSEMBLY - Valve to main tank, right	1	28-10233 to 28-10719 inclusive
	65152-21		LINE ASSEMBLY - Valve to main tank, right	1	28-10720 and up
-36	65152-06		LINE ASSEMBLY - Engine pump to electric pump	1	28-10003 to 28-10719 inclusive
	65578-00		LINE ASSEMBLY - Engine pump to electric pump	1	28-10720 to 28-7210033 inclusive
	65578-03		LINE ASSEMBLY - Engine pump to electric pump	1	28-7310001 and up
-37	65153-00		LINE ASSEMBLY - Valve to main tank, right	1	28-10003 to 28-10232 inclusive
	65153-03		LINE ASSEMBLY - Valve to main tank, right	1	28-10233 to 28-10719 inclusive
	68764-00		LINE ASSEMBLY - Valve to main tank, right	1	28-10720 and up
-38	65154-00		LINE ASSEMBLY - Valve to tip tank, right	1	28-10003 to 28-10719 inclusive
	68765-00		LINE ASSEMBLY - Valve to tip tank, right	1	28-10720 to 28-10851 inclusive
	68765-02		LINE ASSEMBLY - Valve to tip tank, right	1	28-10852 and up
-39	65155-00		LINE ASSEMBLY - Valve to tip tank, left	1	28-10003 to 28-10560 inclusive
	65453-00		LINE ASSEMBLY - Valve to tip tank, left	1	28-10561 to 28-10719 inclusive
	65575-00		LINE ASSEMBLY - Valve to tip tank, left	1	28-10720 and up
-40	65412-00		LINE ASSEMBLY - Valve to main tank, left	1	28-10003 to 28-10560 inclusive
	65454-00		LINE ASSEMBLY - Valve to main tank left	1	28-10561 to 28-10719 inclusive
	65576-00		LINE ASSEMBLY - Valve to main tank, left	1	28-1072091 and up
-41	65157-00	A	LINE ASSEMBLY - Valve to electric pump (19" length)	1	28-10003 to 28-10719 inclusive
	65757-00	8	LINE ASSEMBLY - Valve to electric pump (10 1/2" length)	1	28-10003 to 28-10719 inclusive
	65756-00	B	LINE ASSEMBLY - Valve to electric pump (5" length)	1	28-10003 to 28-10719 inclusive
	65577-00		LINE ASSEMBLY - Valve to electric pump	1	28-10720 and up
-42	69183-00	C	LINE ASSEMBLY - Tip tank	2	28-10003 to 28-10719 inclusive
	69184-00	C	LINE ASSEMBLY - Tip tank	2	28-10720 to 28-10851 inclusive
-43	65816-00	C	FITTING - Tip tank line assembly	2	28-10003 to 28-10851 inclusive
-44	65152-08		LINE - Fuel electric pump (1.75" L.)	1	28-10003 to 28-10719 inclusive
-45	65152-07		LINE - Fuel electric pump (3.15" L)	2	28-10003 to 28-10719 inclusive
-46	558 905		ELBOW - (6D12-D)	2	28-10003 to 28-10719 inclusive
	558 918		ELBOW - (8-4D12 -D)	1	28-10720 to 28-10785 inclusive
	68762-00		ELBOW	1	28-10786 and up

A- Used if Fuel Selector Valve #1H10 is installed.  
 B- Used if Fuel Selector Valve #1H26-2 is installed.  
 C- When ordering, ascertain that Wing Tip Tank Modification Kit 757 151 or 757 152 has been installed per Service Bulletin No. 253.

When ordering, always specify Part Number, Description, and Serial Number of Aircraft

**PIPER PARTS CATALOG**

Figure and Index Number	Part Number	Code	NOMENCLATURE	No. Req.	SERIAL NUMBERS AFFECTED
55-47	558 906		ELBOW - (6E12-D)	1	28-10003 to 28-10719 inclusive
-48	458 868		ELBOW - (AN822-6)	1	28-10003 to 28-10719 inclusive
	458 936	W	ELBOW - (AN833-6)	1	28-10720 to 28-7510091 incl.
	558 830		ELBOW - (RAC2000-6)	1	28-7510092 and up
-49	458 871	W	ELBOW - (AN823-6)	1	
-50	66768-00		ELBOW - Restricted (45 degrees)	1	28-10003 to 28-10719 inclusive
	69504-00		ELBOW - Restricted (90 degrees)	1	28-10720 and up
-51	488 483		TEE - (60TX-S)	1	28-10003 to 28-10719 inclusive
	588 391		TEE - (C3709X4)	1	28-10720 and up
-52	488 487		TEE - (6-012-D)	2	28-10003 to 28-10719 inclusive
-53	488 496		TEE - (W/H 3750 x 4)	1	28-10003 to 28-10719 inclusive
-54	488 318	A,W	TEE - (AN824-2D)	1	
	588 436	B	TEE - (MS20825-2D)	1	
-55	491 048	A,W	UNION - (AN815-2D)	1	28-10003 to 28-10719 inclusive
	491 071	A	UNION - (AN815-2)	1	28-10720 and up
	484 348	B,W	REDUCER - (AN919-0D)	1	28-10003 and up
-56	491 049	W	UNION - (AN815-3D)	1	28-10003 to 28-10719 inclusive
	491 054		UNION - (AN815-3)	1	28-10720 to 28-11039 inclusive
	484 307		REDUCER - (AN919-2)	1	28-11040 and up
-57	491 052	W	UNION - (AN815-6D)	2	28-10003 to 28-10719 inclusive
	491 053	W	UNION-(AN815-8D)	2	28-10720 to 28-10851 inclusive
-58	484 351	W	REDUCER - (AN919-2D)	1	28-10003 to 28-11039 inclusive
-59	491 082		UNION - (6H12-D)	2	28-10003 to 28-10719 inclusive
	491 084		UNION - (8H12-D)	4	28-10720 and up
-60	476 678	W	NIPPLE - (AN816-6)	1	28-10003 to 28-10719 inclusive
	458 864		ELBOW - (AS1040-0606)	1	28-10720 to 28-7510091 incl.
	558 831		ELBOW - (RAC4500-6)	1	28-7510092 and up
-61	476 662	W	NIPPLE - (AN816-6D)	4	
-62	453 680	W	ADAPTER - (AN912-1C)	2	
-63	484 348	W	REDUCER - (AN919-0D)	1	28-10003 to 28-10486 inclusive
-64	460 651	W	CONNECTOR - (W/H 200 x 2)	1	
-65	31197-00	W	PRIMER JET	5	
-66	451 103		PRIMER ASSEMBLY - (K-2406-SAE-2)	1	
-67	463 395		GROMMET - (G57NB-7)	22	28-10003 to 28-10719 inclusive
	453 831		GROMMET - (SB687-9)	23	28-10720 and up
-68	463 394		GROMMET- (G57NB-10)	4	28-10003 to 28-10719 inclusive
	463 401		GROMMET - (2426)	4	28-10720 and up
-69	434 136	W	GROMMET - (AN931-9-13)	2	28-10003 to 28-10719 inclusive
	434 135		GROMMET - (AN931-8-13)	2	28-10720 and up
-70	434 134	W	GROMMET - (AN931-6-10)	1	28-10003 to 28-10719 inclusive
	463 401		GROMMET - (2426)	1	28-10720 and up
-71	434 133	W	GROMMET - (AN931-6-16)	1	28-10003 to 28-10719 inclusive
	434 135	W	GROMMET - (AN931-8-13)	1	28-10720 and up
-72	63915-02		DISC - Firewall	2	28-10003 to 28-11039 inclusive
	63915-18		DISC - Firewall	2	28-11040 and up
-73	63915-07		DISC - Firewall	1	28-10003 to 28-10719 inclusive
	63915-12		DISC - Firewall	1	28-10720 and up
-74	80032-69	W	CLAMP	3	
-75	65344-00		PLATE - Firewall	1	

A - Used with 1/8" I.D. Hose.  
 B- Used with 3/16" I.D. Hose.  
 W- These parts must be ordered from Service Spares Department, Piper Aircraft, Lock Haven, Penna.

When ordering, always specify Part Number, Description, and Serial Number of Aircraft

**PIPER PARTS CATALOG**

Figure and Index Number	Part Number	Code	NOMENCLATURE	No. Req.	SERIAL NUMBERS AFFECTED
55-76	65392-00	A	ARM ASSEMBLY - Fuel selector control	1	28-10003 to 28-10785 inclusive
	69092-00	A	ARM ASSEMBLY - Fuel selector control	1	28-10786 to 28-11300 inclusive
	69092-02		ARM ASSEMBLY - Fuel selector control	1	28-11301 and up
-77	65407-00	B	ROD ASSEMBLY - Fuel selector control	1	28-10003 to 28-10785 inclusive
	65407-05		ROD ASSEMBLY - Fuel selector control	1	28-10786 and up
-78	477 670		NUT - (6B12-D)	1	28-10003 to 28-10719 inclusive
-79	460 464		FERRULE - ~6T12-D~	1	28-10003 to 28-10719 inclusive
-80	65389-00	B	BRACE ASSEMBLY - Fuel selector control	1	28-10003 to 28-10785 inclusive
	69094-02		BRACE ASSEMBLY - Fuel selector control	1	28-10786 and up
-81	65401-00	A	INDICATOR ASSEMBLY - Fuel selector control	1	28-10002 to 28-10785 inclusive
	69088-00	A	INDICATOR ASSEMBLY - Fuel selector control	1	28-10786 to 28-11300 inclusive
	69088-05		INDICATOR ASSEMBLY - Fuel selector control	1	28-11301 and up
-82	69181-00	E	* KNOB - Fuel selector (214)	1	
-83	99364-00		PLACARD - Main fuel tank, maximum capacity 25 gallons	2	28-10003 to 28-7210033 inclusive
	69669-64		PLACARD - Main fuel tank, useable capacity 24 gallons	2	28-7310001 and up
-84	99366-00		PLACARD - Tip fuel tank	2	
-85	65289-00		HANDLE - Quick drain	1	
-86	763 883		COVER ASSEMBLY KIT - Quick drain	1	28-10003 to 28-10660 inclusive
	65461-19		COVER ASSEMBLY - Quick drain, red	1	28-10661 to 28-7610206 inclusive
	65461-06		COVER ASSEMBLY - Quick drain, blue	1	28-10661 to 28-11383 inclusive
	65461-07		COVER ASSEMBLY - Quick drain, brown	1	28-10661 to 28-11300 inclusive
	65461-19		COVER ASSEMBLY - Quick drain, green	1	28-11301 to 28-7610206 inclusive
	65461-19		COVER ASSEMBLY - Quick drain, gold	1	28-11048 to 28-7610206 inclusive
	65461-19		COVER ASSEMBLY - Quick drain, black	1	28-11301 and up
	65461-15		COVER ASSEMBLY - Quick drain, white	1	28-11301 to 28-7610206 inclusive
	65461-19		COVER ASSEMBLY - Quick drain, blue/green	1	28-711001 to 28-7610206 inclusive
-87	484 352	C,W	REDUCER - (AN919-7D)	5	28-10003 to 28-10719 inclusive
	484 359	D,W	REDUCER - (AN919-12D)	4	28-10003 to 28-10719 inclusive
	491 053	W	UNION - (AN815-8D)	4	28-10720 and up
-88	484 697	C,W	"O" RING - (AN6227-9)	5	28-10003 to 28-10719 inclusive
	462 061	D,W	"O" RING - (MS29512-8)	4	28-10003 to 28-10719 inclusive
	462 061	W	"O" RING - (MS29512-8)	4	28-10720 and up

A- No longer available. Order part for serial number 28-11301 and up if Fuel Selector Control Modification Kit has been installed per Service Bulletin 376. If Fuel Selector Control Modification Kit has not been installed per Service Bulletin 376, order Kit 760 681 for serial numbers 28-10003 to 28-10785 inclusive, Kit 760 682 for serial numbers 28-10786 to 28-11039 inclusive, or Kit 760 683 for serial numbers 28-11040 to 28-11300 inclusive.

B- No longer available. Order part for serial numbers 28-10786 and up if Fuel Selector Control Modification Kit has been installed per Service Bulletin 376. If Fuel Selector Control Modification Kit has not been installed per Service Bulletin 376, order Kit 760 781.

C- Used if Fuel Selector Valve 2H10 is installed.

D- Used if Fuel Selector Valve 1 H26-2 is installed.

E- Reference latest version of Service Bulletin 285 for Fuel Selector Control Stop Assembly Kit No. 760 251V; reference latest version of SB 376 for fuel selector control modification kit No. 760 681V/682V.

W- These parts must be ordered from Service Spares Department, Piper Aircraft, Lock Haven, Penna.

When ordering, always specify Part Number, Description, and Serial Number of Aircraft

**PIPER PARTS CATALOG**

Figure and Index Number	Part Number	Code	NOMENCLATURE	No. Req.	SERIAL NUMBERS AFFECTED
55-89	65396-00	E	TORQUE TUBE - Fuel selector control	1	28-10003 to 28-10785 inclusive
	69093-00	E	TORQUE TUBE - Fuel selector control	1	28-10786 to 28-11300 inclusive
	69093-02		TORQUE TUBE - Fuel selector control	1	28- 11301 to 28-7210033 incl..
	76321-00		TORQUE TUBE - Fuel selector control	1	28-7310001 and up
-90	757 148	C	FUEL VALVE KIT	1	28-10003 to 28-10719 inclusive
	760 895	C	FUEL VALVE KIT	1	28-10720 to 28-7410093 incl.
	492 290		FUEL VALVE - (1H65-4)	128-7410094 and up	
-91	758 534	G	* BOWL - Fuel filter (A1-90-1)	1	
-91a	751 871	A,B,W	* GASKET Filter	1	
	762 503	D	* "O" RING - (Viton 2-043)	1	
91b	751 796	A,W	* FILTER ASSEMBLY	1	
	754 816	B,D	* FILTER ASSEMBLY	1	
-91c	755 919	W	* "O" RING - (Viton)	1	
-91d	756 036	B	* RING - Snap, inlet port (N5000-68)	4	
-91e	757 632	B	* SPRING - Inlet port	4	
-91f	758 176	B	* BALL - Inlet port	4	
-91g	756 035	B	"O" RING - Inlet port	4	
-91h	63900-133		* BUSHING - Rod assembly	1	
-92	63998-16		TANK ASSEMBLY - Left wing fuel	1	
	63998-17		TANK ASSEMBLY - Right wing fuel	1	
-93	462 019	W	GASKET - Fuel gauge (1515832)	1	
-94	63913-193		* HOSE - Connector	1	
-94a	63913-194		* HOSE - Connector	1	
-95	62033-00		* PLATE - Drain	1	
-96	63954-00		* OUTLET ASSEMBLY - Fuel tank	1	
-97	72091-00	W	* STRAINER - Fuel tank finger	1	
-98	36625-02	K	* VENT ASSEMBLY - Fuel tank, left	1	
	36625-03	K	* VENT ASSEMBLY - Fuel tank, right	1	
-99	66817-00		* CAP ASSEMBLY - Fuel tank (non-locking)	1	
-99a	66815-00	F	* GASKET - Fuel cap (with lock)	1	
-99b	492 153	F	* VALVE - Fuel cap vent (VA3123)	1	
-99c	39856-02	H	LOCK ASSEMBLY - Fuel cap	2	
-100	451 857	W	* ADAPTER - (AN840-40)	1	
	560 951		* ADAPTER - (1068 x 6 x 2)	1	
-101	62060-00		* VENT TUBE - Left (with bead)	1	
	62060-01		* VENT TUBE - Right with bead)	1	
	62060-04		* VENT TUBE - Left (without bead)	1	
	62060-05		* VENT TUBE - Right (without bead)	1	
-102	69785-00		* FILLER NECK ASSEMBLY	1	

- A- Used if Fuel Selector Valve 1H10,1H26-2 or 1H26-3 is installed.
- B- Used if Fuel Selector Valve 1H26-4 or 1H26-5 is installed.
- C- Ascertain Service Bulletin 376 has been compiled with. Appropriate kit must be installed prior to installation of Fuel Valve Kit 760 895V on aircraft serial numbers 28-10001 to 28-7310125 inclusive.
- D- Used if Fuel Selector Valve 1H65-2 is installed.
- E- No longer available. Order part for serial numbers 28-11301 to 28-7210033 inclusive. If Fuel Selector Control Modification Kit has not been installed per Service Bulletin 376. If Fuel Selector Control Modification Kit has not been installed per Service Bulletin 376. order Kit 760 781 for serial numbers 28-10003 to 28-10785 inclusive, Kit 760 782 for serial numbers 28-10786 to 28-11039 inclusive, or Kit 760 783 for serial numbers 28-11040 to 28-11300 inclusive.
- F- Used with Fuel Cap P/N 66817-00 only.
- G- Used with Fuel Selector Valve 1H65-2 or 1 H65-4 only.
- H- Used with Fuel Cap Assembly Kit, P/N 39830-00 only.
- J- Kit includes (2) cap assemblies with matching locks.
- K- Reference the latest version of Service Bulletin 342 for instructions on Main Tank Vent Modification and Kit No. 760 560V for the PA-235 using serial numbers 28-1001 to 28-11378 inclusive and 28-7110001 to 28-7110024 inclusive.
- W- These parts must be ordered from Service Spare Department Piper Aircraft, Lock Haven, Penna.

When ordering, always specify Part Number, Description, and Serial Number of Aircraft

**PIPER PARTS CATALOG**

Figure and Index Number	Part Number	Code	NOMENCLATURE	No. Req.	SERIAL NUMBERS AFFECTED
55-103	62059-00		* FITTING - Fuel line	1	
-104	62044-00		* PLATE - Fuel tank	1	
-105	554 861	W	* CLAMP - (SAE TY F-4)	4	
-106	68101-02		GAUGE - Fuel tank	2	
-107	492 312	W	DRAIN - Fuel tank (CCA-36150) (Pet-Cock Type), non-locking	2	
	491 806		DRAIN - Fuel tank (F391-187B) (Flush Type)	2	
-108	65815-04		TANK ASSEMBLY - Fuel, wing tip, left	1	
	65815-05		TANK ASSEMBLY - Fuel wing tip, right	1	
-109	462 019	W	* GASKET - Fuel gauge (1515832)	1	
-110	68101-02		* GAUGE - Fuel tank	1	
-111	66817-00		* CAP ASSEMBLY - Fuel tank	1	
-111a	66815-00	B	* * GASKET - Fuel cap	1	
-111b	492 153	B	* * VALVE - Fuel cap vent (VA3123)	1	
-112	492 312	W	* DRAIN - (CCA-36150)(Pet-Cock Type), non-locking	1	
-113	65107-00		* COVER - Access	1	
-114	65108-04		* TUBE ASSEMBLY - Vent, left	1	
	65108-05		* TUBE ASSEMBLY - Vent, right	1	
-115	72091-00	W	* STRAINER - Fuel tank	1	1 28-10003 to 28-10719 inclusive
	68763-00		* STRAINER - Fuel tank	1	1 28-10720 and up
-116	453 656	W	* BUSHING - (AN912-4D)	1	
-117	460 464		FERRULE - (6T12- D)	8	28-10003 to 28 -10719 inclusive
	460 463		FERRULE - (8T12-D)	8	28-10720 and up
-118	476 678	W	NIPPLE - (AN816-6)	1	28-10720 and up
-119	476 689		NIPPLE - (AN816-7)	1	28-10720 and up
-120	62833-36		WASHER - Fuel selector valve stem	1	
-121	62924-02		SAMPLER - Fuel (used with Pet-Cock Type Drain)	1	
	67728-00		SAMPLER - Fuel (used with Flush Type Drain)	1	
-122	455 173	A,W	COUPLING - (AN910-ID)	1	
-123	62833- 11		WASHER - Rod assembly	2	
-124	690 609	W	WASHER - (NAS1149F0332P)	1	
	424 051	W	COTTER PIN - (AN380-2-2)	1	
-125	476 647	A,W	NIPPLE - (AN816-3D)	1	
-126	476 690		NIPPLE - (8-4G12-D)	1	28-10720 and up
-127	477 680		NUT - (8B12D)	1	28-10720 and up
-128	460 463		FERRULE - (8T12D)	1	28-10720 and up

A- Used with 3/16" I.D. Hose.  
 B- Used with Fuel Cap Part No. 66817-00 only.  
 W- These parts must be ordered from Service Spares Department, Piper Aircraft, Lock Haven, Penna.

When ordering, always specify Part Number, Description, and Serial Number of Aircraft

**2L23 THRU 3A5  
INTENTIONALLY LEFT BLANK**